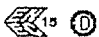

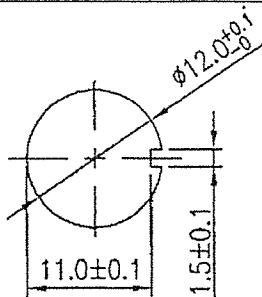
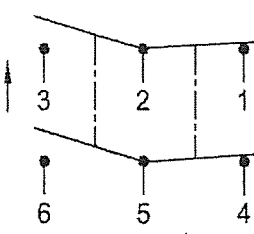


THIS INFORMATION IS CONFIDENTIAL AND PROPRIETARY TO CW INDUSTRIES INCORPORATED AND ITS AFFILIATES. IT MAY NOT BE DISCLOSED TO ANYONE, OTHER THAN CW INDUSTRIES PERSONNEL, WITHOUT WRITTEN AUTHORIZATION FROM CW INDUSTRIES INCORPORATED, SOUTHAMPTON, PENNSYLVANIA USA.

Ratings		Mounting Hole	Circuit
12 (4) A 250V AC   US			
Contact Resistance	50m ohm max.		
Insulation Resistance	DC 500V 100M ohm Min.		
Dielectric Strength	AC 1500V 1 minute		
Operation Temperature	0° C ~ 85° C		
Switch Function	6P DPDT ON - (ON)		

( ) = Momentary Function

#### MATERIAL:

Frame: Nylon 6/6, Black

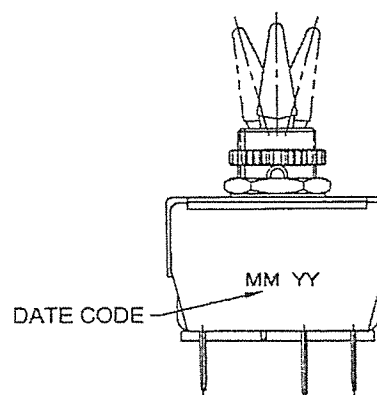
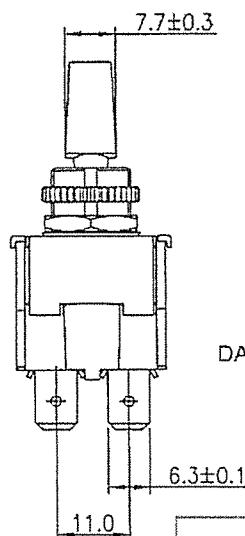
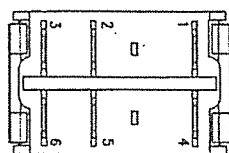
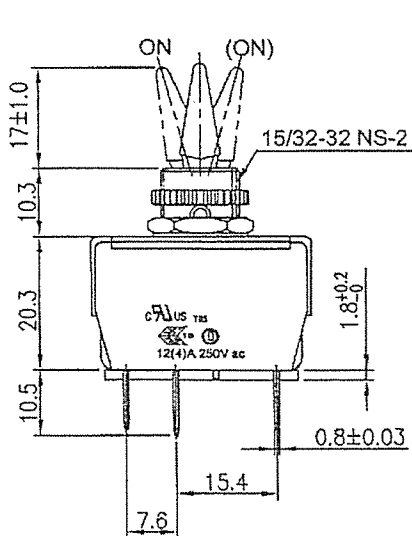
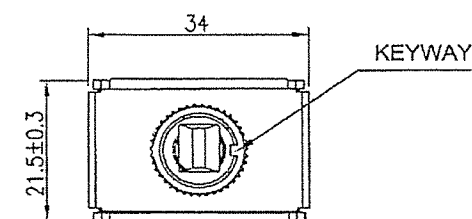
UL Flame: 94-V0

Lever: Nylon 66+30%GF

UL Flame: 94-V0

Terminal: Copper Alloy

Water proof and Dust Proof  
to fit IP-56



Order Chart									
Series		Lever Type Plastic							
GTS448	P	3	01	A	H	R	Knurl Nut		
Function		Hex Nut							
Term. Type .250" SQ		No Barrier							

Tolerances Unless Otherwise Specified +/-0.5.

RoHS Compliant

R13-448P-3-01A-HR

2 | Updated Order Chart.SCI part number & CWI logo APhilip 02/06/23

1 | Updated material notes. 3-21-13.

**CW INDUSTRIES**  
Southampton, Pa. 18966  
Tel 215.355.7080/www.cwind.com

Date Drawn; 8/13/12

Rev. 2

Unit: mm

Checked By: *G. Gold*

Title:

TOGGLE SWITCH

CW P/N:

GTS448P301AHR