
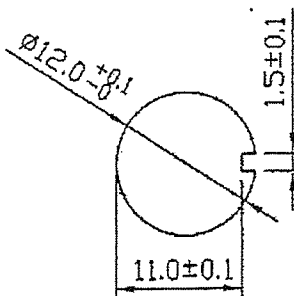
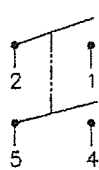
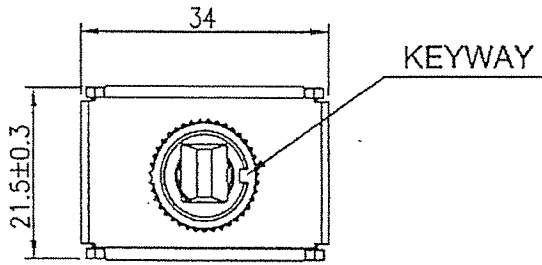


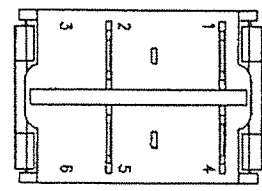
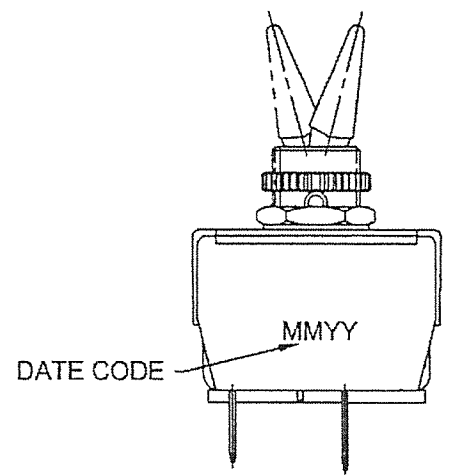
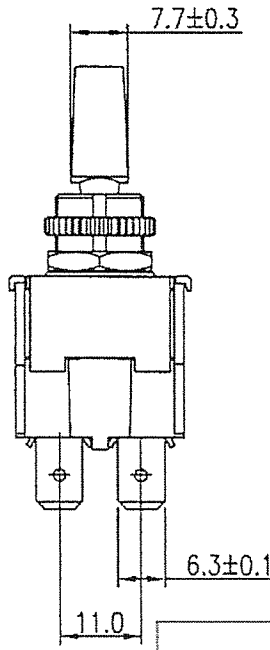
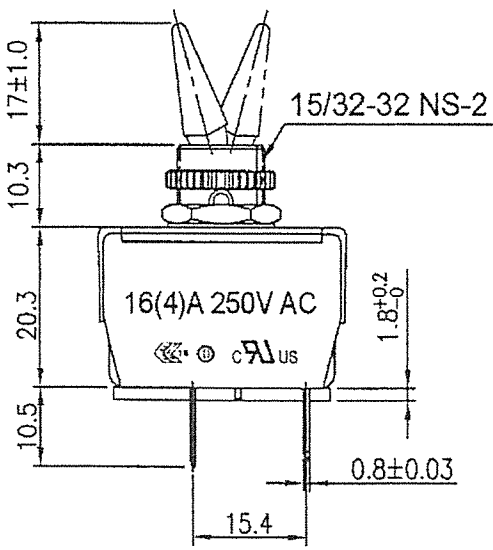
THIS INFORMATION IS CONFIDENTIAL AND PROPRIETARY TO CW INDUSTRIES INCORPORATED AND ITS AFFILIATES. IT MAY NOT BE DISCLOSED TO ANYONE, OTHER THAN CW INDUSTRIES PERSONNEL, WITHOUT WRITTEN AUTHORIZATION FROM CW INDUSTRIES INCORPORATED, SOUTHAMPTON, PENNSYLVANIA USA.

Rating	16(4)A 250V AC		Mounting Hole	Circuit
				
Contact Resistance	50m ohm Max.			
Insulation Resistance	DC 500V 100M ohm Min.			
Dielectric Strength	AC 1500V 1 minute			
Switch Function	4P DPST ON-OFF			
Operation Temp.	0° C ~ 85° C			



MATERIAL:
 Frame: Nylon 6/6, Black
 UL Flame: 94-V0
 Lever: Nylon 66+30%GF
 UL Flame: 94-V0
 Terminal: Copper Alloy

Water proof and Dust Proof
 to fit IP-56



Order Chart					
Series	Lever Type Plastic				
GTS448	F	3	01	AHR	Knurl Nut
Function				Hex Nut	
Term. Type .250" SQ					
No Barrier					

Tolerances Unless Otherwise Specified +/-0.5.

RoHS Compliant

R13-448F-3-01A-HR

6 | Updated Order Chart,SCI part number & CWI logo APhilip 02/06/23

5 | Updated material notes & views. 3-21-13.

CW INDUSTRIES
 Southampton, Pa. 18966
 Tel 215.355.7080/www.cwind.com

Date Drawn: 1/28/11	Rev. 6	Unit: mm	Checked By: <i>G. Gold</i>
Title: TOGGLE SWITCH		CW P/N: GTS448F301AHR	