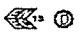
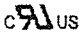
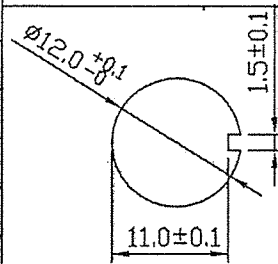
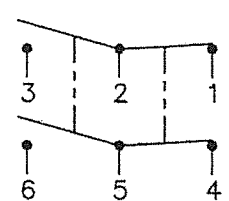
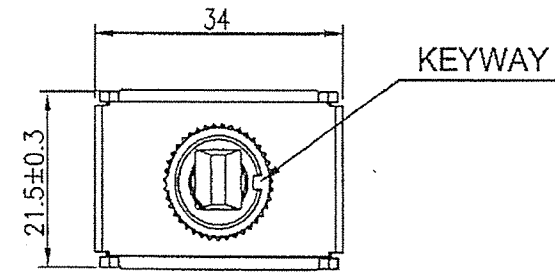


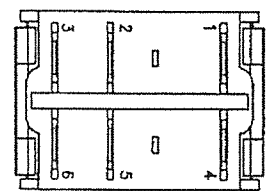
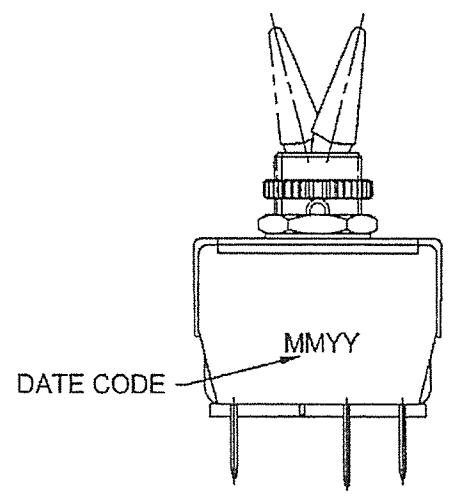
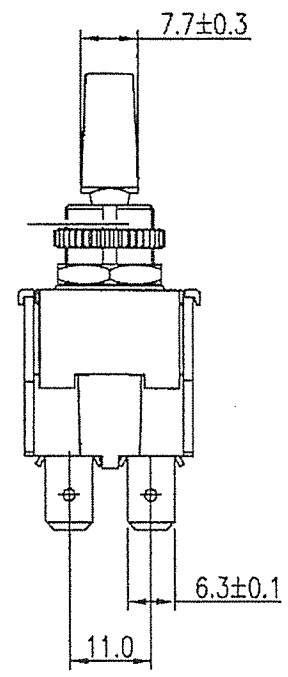
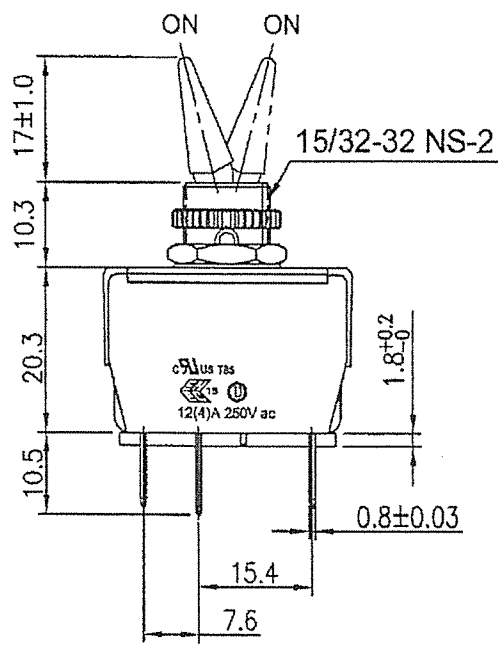
THIS INFORMATION IS CONFIDENTIAL AND PROPRIETARY TO CW INDUSTRIES INCORPORATED AND ITS AFFILIATES. IT MAY NOT BE DISCLOSED TO ANYONE, OTHER THAN CW INDUSTRIES PERSONNEL, WITHOUT WRITTEN AUTHORIZATION FROM CW INDUSTRIES INCORPORATED, SOUTHAMPTON, PENNSYLVANIA USA.

| | | | |
|------------------------------|---|--|---|
| Rating | 12(4)A 250V ac  c  US | Mounting Hole | Circuit Diagram |
| Contact Resistance | 50m ohm Max. |  |  |
| Insulation Resistance | DC 500V 100M ohm Min. | | |
| Dielectric Strength | AC 1500V 1 minute | | |
| Switch Function | 6P DPDT ON-ON | | |
| Operation Temperature | 0°O~85°C | | |



MATERIAL:
 Frame: Nylon 6/6, Black
 UL Flame: 94-V0
 Lever: Nylon 66+30%GF
 UL Flame: 94-V0
 Terminal: Copper Alloy


Water proof and Dust Proof
to fit IP-56



| Order Chart | |
|---------------------|--------------------|
| Series | Lever Type Plastic |
| GTS448 B 3 01 AHR | Knurl Nut |
| Function | Hex Nut |
| Term. Type .250" SQ | No Barrier |

Tolerances Unless Otherwise Specified +/-0.5.
 RoHS Compliant
 R13-448B-3-01A-HR

2 | Updated Order Chart,SCI part number & CWI logo APhilip 02/06/23
 1 | Updated views & dimensions. 3-06-13.

| | | | | |
|--|-----------------------------|--------|------------------------------|----------------------------|
|  CW INDUSTRIES Southampton, Pa. 18966 Tel 215.355.7080/www.cwind.com | Date Drawn: 8/09/2012 | Rev. 2 | Unit: mm | Checked By: <i>G. Guld</i> |
| | Title: TOGGLE SWITCH | | CW P/N: GTS448B301AHR | |