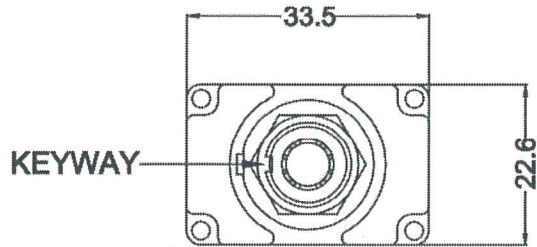
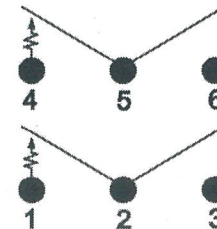
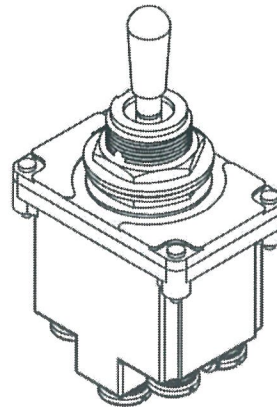
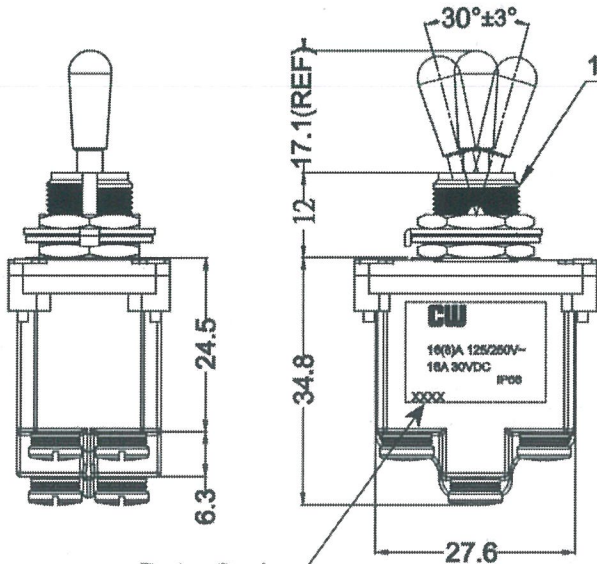


THIS INFORMATION IS CONFIDENTIAL AND PROPRIETARY TO CW INDUSTRIES INCORPORATED AND ITS AFFILIATES. IT MAY NOT BE DISCLOSED TO ANYONE, OTHER THAN CW INDUSTRIES PERSONNEL, WITHOUT WRITTEN AUTHORIZATION FROM CW INDUSTRIES INCORPORATED, SOUTHAMPTON, PENNSYLVANIA USA.



Rating: 16(8)A 125/250V~ T55
 Electrical Life: 10,000 cycles
 Mechanical Life: 50,000 cycles
 Contact resistance: 20mΩ Initial (MAX),
 Insulation resistance: 500VDC - 100MΩ (MIN).
 Dielectric Strength:
 (1) 1500VAC For 1 minute (Terminal to Enclouse)
 (2) 500VAC For 1 minute (Terminal to Terminal)
 Degree of protection: IP68 (Above the panel)
 Actuator: Brass/Dull Nickel Plated

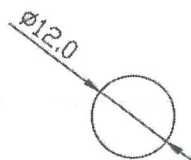
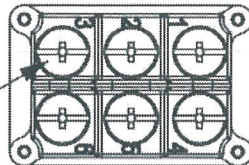


CIRCUIT: DPDT
 (ON) - OFF - ON
 () = Momentary function

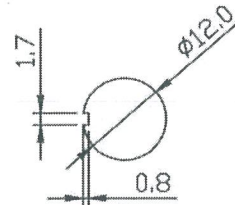
SWITCH FUNCTION		
(ON)	OFF	ON
(1-2)	OFF	2-3
(4-5)		5-6

Date Code

3x6-32 UNC 2B



MOUNTING HOLE



WITH KEYWAY

Order Chart				
Series	Terminal Type		Lever Type	
GTB3	B	5	5	C - Label Type
			Position/Function	

NOTE: TOLERANCES UNLESS OTHERWISE SPECIFIED : ± .02 / 0.5 (mm).

MASTER

TB3-AB55-1C

CW INDUSTRIES
 Southampton, Pa. 18966
 Tel 215.355.7080/www.cwind.com

Date Drawn: DW 7/19/23

Rev. 0

Unit: mm

Checked By: *G. GULD*

Title: **TOGGLE SWITCH**

CW P/N: **GTB3B55C**