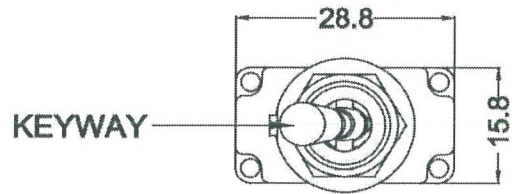
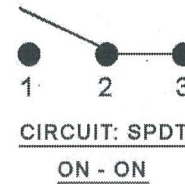
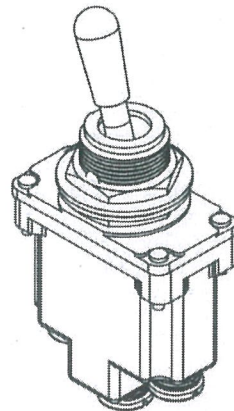
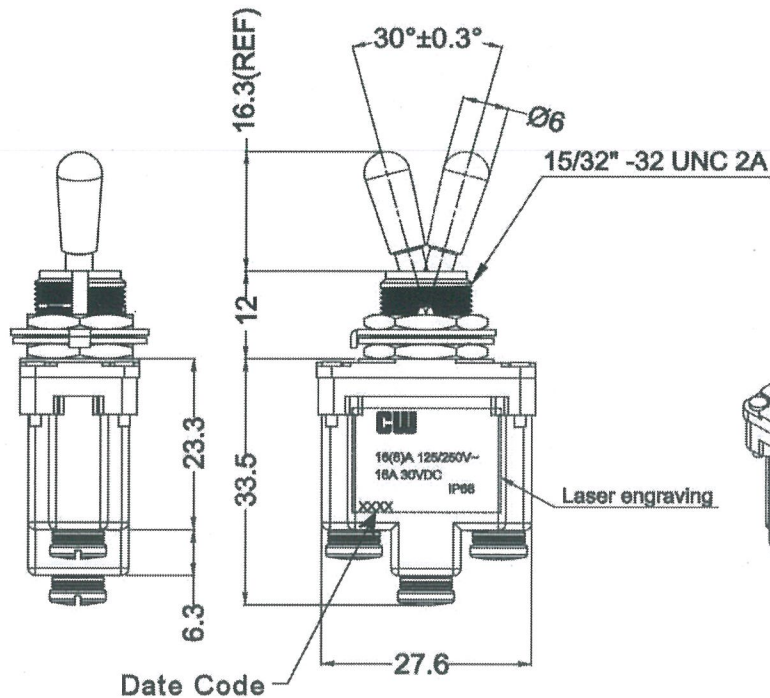


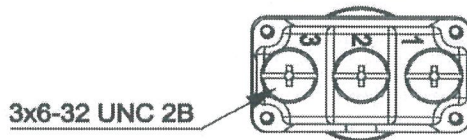
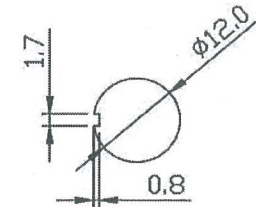
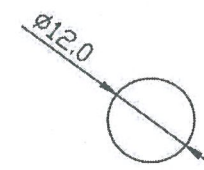
THIS INFORMATION IS CONFIDENTIAL AND PROPRIETARY TO CW INDUSTRIES INCORPORATED AND ITS AFFILIATES. IT MAY NOT BE DISCLOSED TO ANYONE, OTHER THAN CW INDUSTRIES PERSONNEL, WITHOUT WRITTEN AUTHORIZATION FROM CW INDUSTRIES INCORPORATED, SOUTHAMPTON, PENNSYLVANIA USA.



Rating: 16(8)A 125/250V~ T55  
 Electrical Life: 10,000 cycles  
 Mechanical Life: 50,000 cycles  
 Contact resistance: 20mΩ Initial (MAX),  
 Insulation resistance: 500VDC - 100MΩ (MIN).  
 Dielectric Strength:  
 (1) 1500VAC For 1 minute (Terminal to Enclosure)  
 (2) 500VAC For 1 minute (Terminal to Terminal)  
 IP68 Rated (Above the panel)  
 Actuator: Brass/Dull Nickel Plated



SWITCH FUNCTION	
ON	ON
1 - 2	2 - 3



Order Chart				
Series	Terminal Type	Lever Type	Position/Function	Label Type
GTB2	B	5	3	C

NOTE: TOLERANCES UNLESS OTHERWISE SPECIFIED : ± .02 / 0.5 (mm).

RoHS Compliant

TB2-AB53-1C

MASTER

**CW INDUSTRIES**  
 Southampton, Pa. 18966  
 Tel 215.355.7080/www.cwind.com

Date Drawn: DW 4/4/23

Rev. 1

Unit: mm

Checked By: *G. GOLD*

Title:  
**TOGGLE SWITCH**

CW P/N:  
**GTB2B53C**

1 Added Date Code. DW 7/20/23