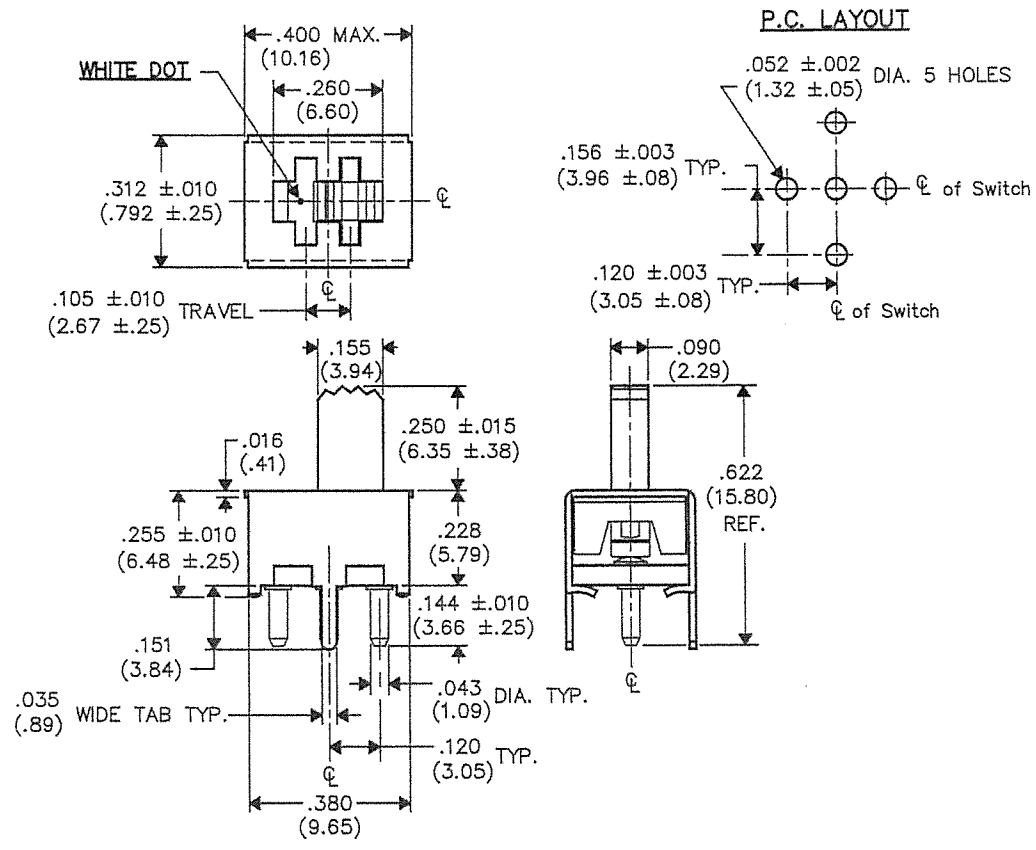


DIMENSIONS IN INCHES (MILLIMETERS)  
DO NOT SCALE DRAWING .....

Dwg. No.  
**GS-111-0044**

A B C D E

THIS INFORMATION IS CONFIDENTIAL AND PROPRIETARY TO CW INDUSTRIES INCORPORATED AND ITS AFFILIATES. IT MAY NOT BE DISCLOSED TO ANYONE OTHER THAN CW INDUSTRIES PERSONNEL, WITHOUT WRITTEN AUTHORIZATION FROM CW INDUSTRIES INCORPORATED, SOUTHAMPTON, PENNSYLVANIA USA.




B-FORMAT 2002

REVISIONS
0
1

RELEASED:  
 DGW 7-15-13  
 Jul. 19, 2013  
 Corrected button height  
 .250 was 342.  
 DGW 10/02/18  
 1 OCT 0 5 2018

1	2	3	4	5	6	7	8	9	10
---	---	---	---	---	---	---	---	---	----

PDF MADE	 Southampton, Pa. 18966		Title: <b>MICRO SWITCH S.P. - D.T.</b>
	TOLERANCES UNLESS OTHERWISE SPECIFIED 2 Place Decimal ±.010 METRIC 3 Place Decimal ±.005 1 Place Dec. ±.25mm Angles ..... ±1' 2 Place Dec. ±.13mm		
	Made for: CW IND. Drawn by: DGW 7-15-13		Division: <b>SWITCH</b>
	Checked by: <i>G. GULD 10-3-18</i> Approved: <i>[Signature]</i> 10/01/18		Dwg. No. <b>GS-111-0044</b>

**MASTER**