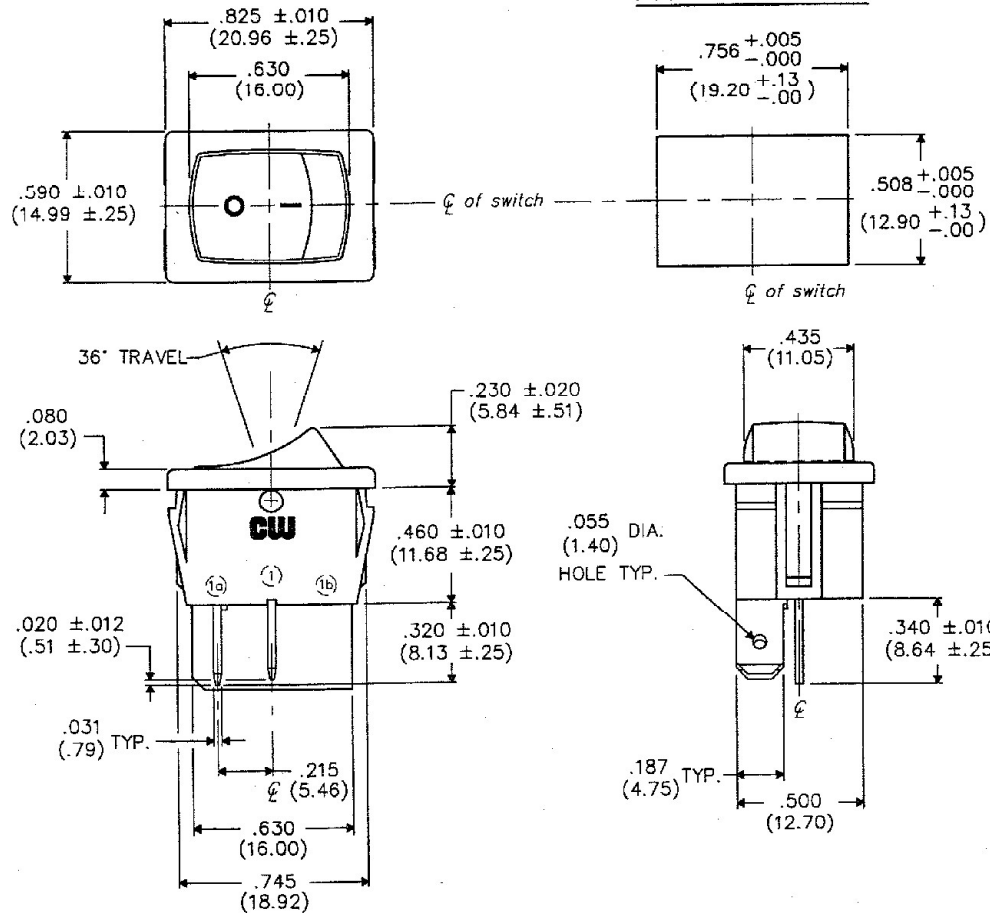


DIMENSIONS IN INCHES (MILLIMETERS)
DO NOT SCALE DRAWING

Dwg. No.
GRS-4011-0019

PANEL PIERCING



MATERIAL:
 ROCKER KNOB- Nylon 94V-2
 HOUSING- Nylon 94V-2
 TERMINAL/STATIONARY/MOVING CONTACT- Copper alloy silver plated.

SPRING- music wire
 PLUNGER- Nickel plated steel

PERFORMANCE STANDARDS-
 Endurance- 100,000 cycles, no load, minimum
 25,000 cycles at rated load minimum up to 16A
 125 VAC
 10,000 cycles at rated load minimum at 16A
 250 VAC
 Contact Resistance- less than .01 Ohm at 10 mA (initial)
 Operating Temperature- 105° C maximum
 High Voltage Dielectric Withstanding Voltage- 2,500 V,
 60 Hz for 1 minute between mounting
 surface and circuit connections

HUMIDITY- insulation resistance > 10³ MOhms after 100 hours
 at 95% R.H. and 50° C followed by 1 hour dry
 at ambient room conditions

ELECTRICAL RATING-
 16A 125-250VAC , 10A 14V (T)
 3/4 H.P. 125-250VAC , 3A 125V (L)
 10(4) 250 ~ μ

LISTING AGENCIES-

FORM-B5
REVISIONS
 0
 RELEASED: DGW 6-01-95
 6-06-95
 1
 REVISED & REDRAWN.
 REPLACED 8 TOOTH CLAW
 WITH NEW 2 STEP CLAW ON
 HOUSING.
 DGW 4-25-97
G.G. MAY 19 1997



CW INDUSTRIES
 Southampton, Pa. 18966
 TOLERANCES UNLESS OTHERWISE SPECIFIED:
 2 Place Decimal \pm .010 METRIC
 3 Place Decimal \pm .005 1 Place Dec. \pm .25mm
 Angles \pm 1' 2 Place Dec. \pm .13mm
 Made for: CW IND.
 Drawn by: DGW 6-01-95
 Checked by: G. GULD 5-19-97
 Approved: B. Flanagan 5-19-97

Title: **ROCKER SWIDGET
 ASSEMBLY
 (SNAP IN)
 S.P. - S.T.**
 Division: **SWITCH**
 Dwg. No.: **GRS-4011-0019**