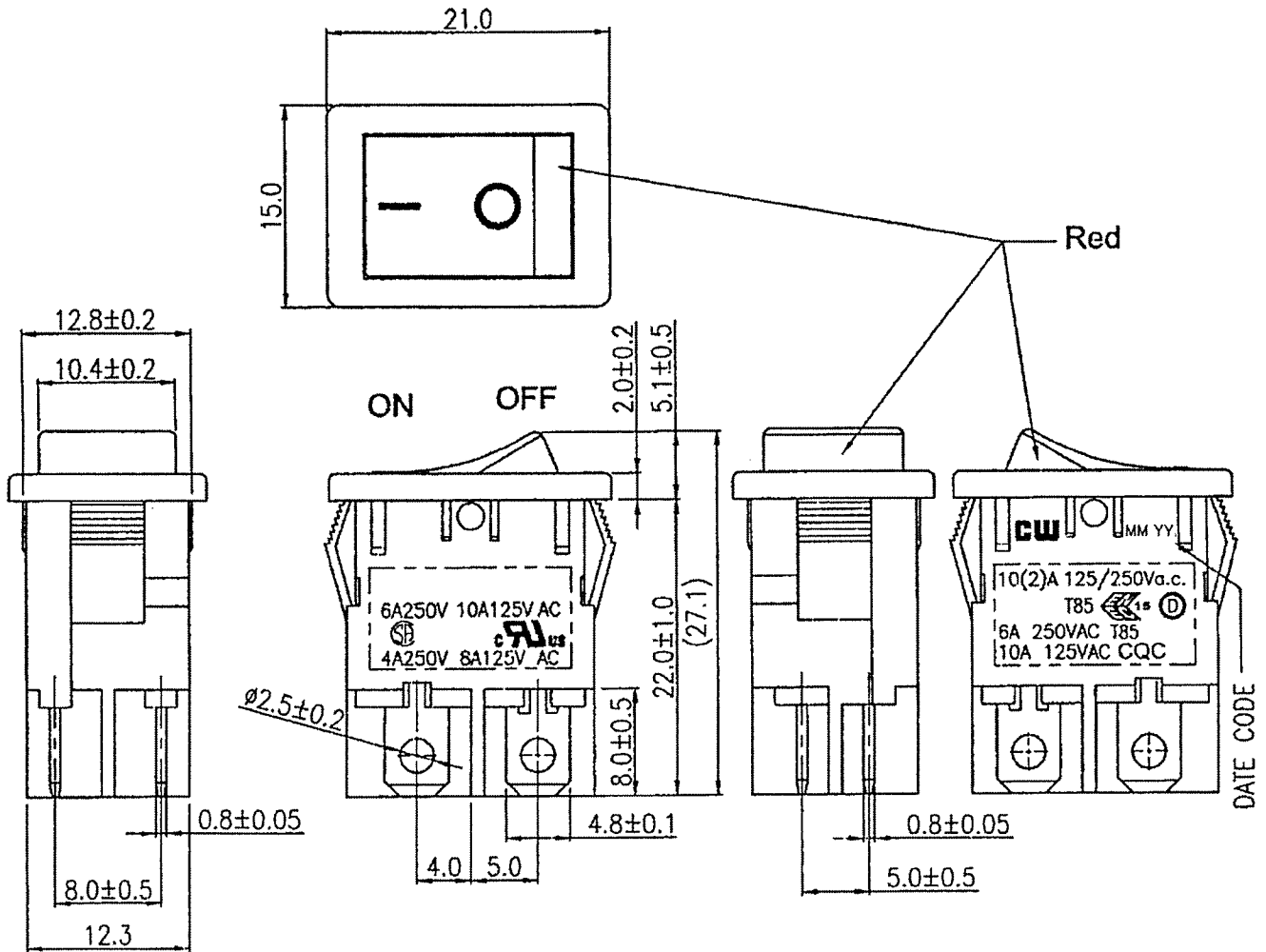


THIS INFORMATION IS CONFIDENTIAL AND PROPRIETARY TO CW INDUSTRIES INCORPORATED AND ITS AFFILIATES. IT MAY NOT BE DISCLOSED TO ANYONE, OTHER THAN CW INDUSTRIES PERSONNEL, WITHOUT WRITTEN AUTHORIZATION FROM CW INDUSTRIES INCORPORATED, SOUTHAMPTON, PENNSYLVANIA USA.

Rating	6A250V 10A125V AC		Mounting Hole		Circuit Diagram
	4A250V 6A125V AC				
	10(2)A 125/250Va.c.		Thickness	X	Y
Contact Resistance	50m ohm max.		0.75 - 1.25	19.2 - 0.1	13.1 + 0.1
Insulation Resistance	DC 500V 100M ohm min.		1.25 - 2.00	19.4 - 0.1	13.1 + 0.1
Dielectric Strength	AC 1500V 1 minute		2.00 - 3.00	19.8 - 0.1	13.1 + 0.1
Operating Temperature	-25°C ~ 85°C				
Switch Function	4P DPST ON - OFF				

BASE COLOR: Black
 BUTTON COLOR: Black / Red
 PRINTING: White, Hot Stamping



RoHS Compliant

1 Updated Ratings, Dimensions & Views. 10-01-13.			
Date Drawn: 12/17/09	Rev. 1	Unit: mm	Checked By: G. Gold
Title: ROCKER SWITCH		CW P/N: GRB073A202BB	

CW INDUSTRIES
 Southampton, Pa. 18966
 Tel 215.355.7080/www.cwind.com