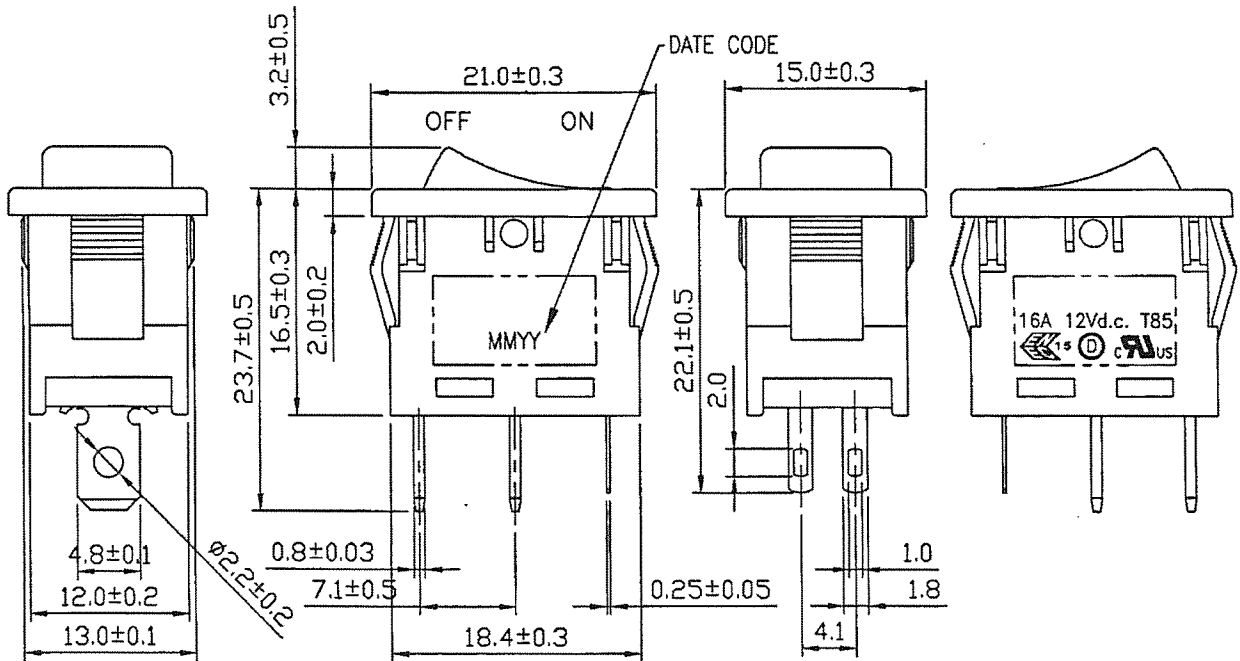
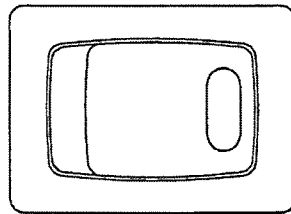


THIS INFORMATION IS CONFIDENTIAL AND PROPRIETARY TO CW INDUSTRIES INCORPORATED AND ITS AFFILIATES. IT MAY NOT BE DISCLOSED TO ANYONE, OTHER THAN CW INDUSTRIES PERSONNEL, WITHOUT WRITTEN AUTHORIZATION FROM CW INDUSTRIES INCORPORATED, SOUTHAMPTON, PENNSYLVANIA USA.

Rating	16A. 12V DC
Contact Resistance	50m ohm max.
Insulation Resistance	DC 500V 100M ohm min.
Dielectric Strength	AC 1500V 1 minute
Operating Temperature	-20°C ~ 85°C
Switch Function	2P SPST ON-OFF LED Independent
Lamp Type	LED Green @ 20mA, If=2.2VDC No Resistor

Mounting Hole			Circuit Diagram
Thickness	X	Y	
0.75 - 1.25	19.2 - 0.1	13.0 + 0.1	
1.25 - 2.00	19.4 - 0.1	13.0 + 0.1	
2.00 - 3.00	19.8 - 0.1	13.0 + 0.1	

Material:
 Frame: Black,Nylon#66
 Actuator: Black,Nylon#66
 LED Lens: Green PC
 LED:Green



Order Chart						
Series	Terminal Type	Actuator Color	Frame Color	Lamp Type	Voltage	
GRB066	L 02	B	BGG	L 1		
Function		Frame Color		Lamp Type		

Tolerances Unless Otherwise Specified +/- 0.3mm.

RoHS Compliant

R13-66L-02-BBGG-L1

5	Removed CW logo, added order chart and SCI product number. APhilip 11/28/22
4	Removed 20A rating, 12V sticker and 2P was 4P. Updated views. 1/5/15.

CW INDUSTRIES
 Southampton, Pa. 18966
 Tel 215.355.7080/www.cwind.com

Date Drawn: 12/17/09

Rev. 5

Unit: mm

Checked By: *G. GULD*

Title:
ROCKER SWITCH

CW P/N:
GRB066L02BBGGL1