
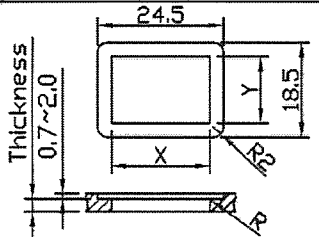
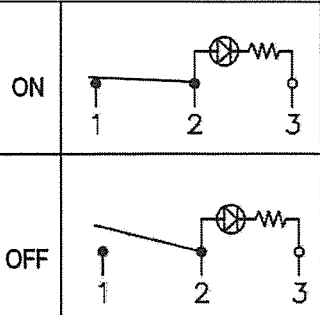
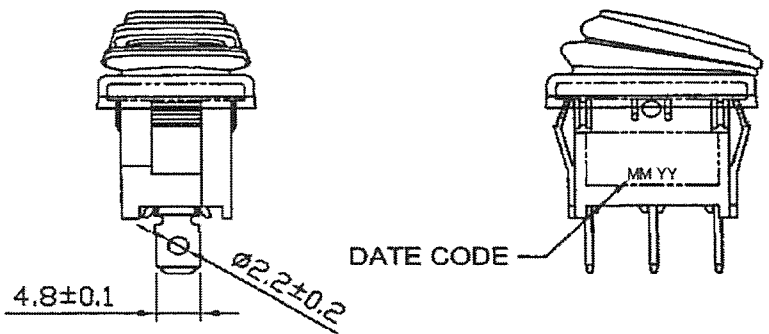
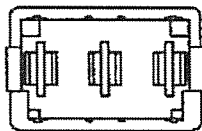
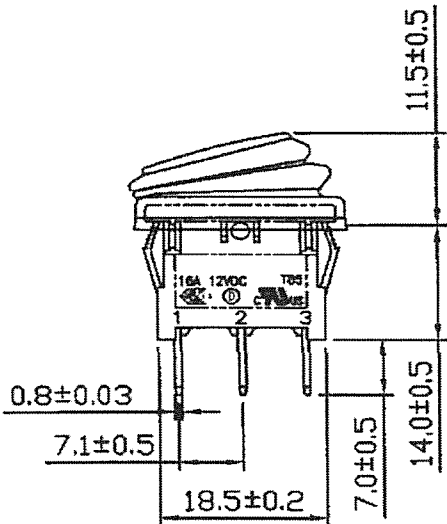
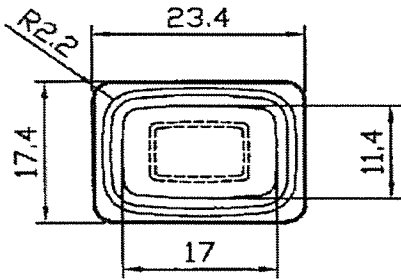


THIS INFORMATION IS CONFIDENTIAL AND PROPRIETARY TO CW INDUSTRIES INCORPORATED AND ITS AFFILIATES. IT MAY NOT BE DISCLOSED TO ANYONE, OTHER THAN CW INDUSTRIES PERSONNEL, WITHOUT WRITTEN AUTHORIZATION FROM CW INDUSTRIES INCORPORATED, SOUTHAMPTON, PENNSYLVANIA USA.

Rating	16A 12VDC		Mounting Hole		Circuit Diagram	
Contact Resistance	50m ohm Max.					
Insulation Resistance	DC 500V 100M ohm Min.	Thickness				X
Dielectric Strength	AC 1500V 1 minute	0.75...1.5	19.4-0.1	13+0.1		
Operation Temperature	-25°C~85°C	1.5...2.5	19.8-0.1	13+0.1		
Switch Function	3P SPST ON - OFF LED Dependent					
Lamp Type	Blue LED with Resistor					



Order Chart						
Series		Terminal Style		Lamp		
GRB066	B8	02	B	U	L	1
Function		Actuator Color		Frame Color		

R13-66B8-02

1 | Removed CW logo. APhilip 11/28/22

CW INDUSTRIES
Southampton, Pa. 18966
Tel 215.355.7080/www.cwind.com

Date Drawn: 2/02/18

Rev. 1

Unit: mm

Checked By: *G. GULD*

Title: **ROCKER SWITCH**

CW P/N: **GRB066B802BUL1**