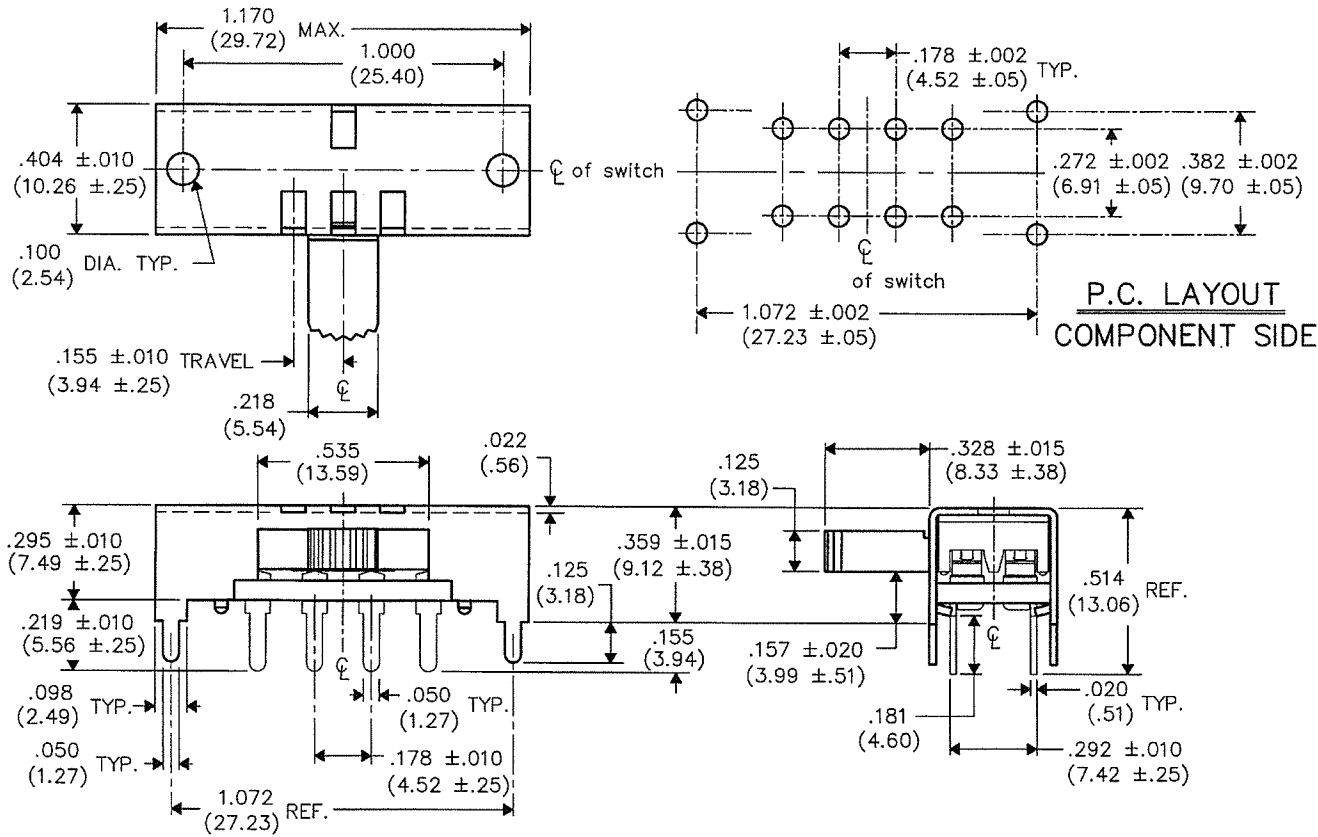


E  
D  
C  
B  
A



1 2 3 4 5 6 7 8 9 10

B-FORMAT 2002

REVISIONS	0
RELEASED	8-12-2008
DGW	AUG 15 2008

**ATTENTION**

THIS DRAWING AND ITS ATTACHMENTS, IF ANY, ARE PROPRIETARY TO CW INDUSTRIES AND DESCRIBE DESIGNS THAT ARE CONFIDENTIAL AND MUST NOT BE DISCLOSED UNLESS AUTHORIZED, IN WRITING, BY AN OFFICER OF CW INDUSTRIES.....

**CW INDUSTRIES**  
Southampton, Pa. 18966

TOLERANCES UNLESS OTHERWISE SPECIFIED

2 Place Decimal $\pm .010$	METRIC
3 Place Decimal $\pm .005$	1 Place Dec. $\pm .25$ mm
Angles ..... $\pm 1^\circ$	2 Place Dec. $\pm .13$ mm

Made for: CW IND.  
 Drawn by: DGW 8-12-2008  
 Checked by: G. Gold 8-13-08  
 Approval: G. Gold 8-13-08

Title:	MINI-SWITCH SIDE ACTUATED ASSEMBLY D.P./3 POS.
Division:	SWITCH
Dwg. No.	GPI-154-0007

MASTER MASTER