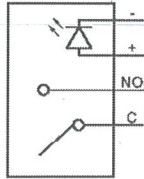
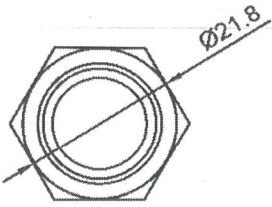


THIS INFORMATION IS CONFIDENTIAL AND PROPRIETARY TO CW INDUSTRIES INCORPORATED AND ITS AFFILIATES. IT MAY NOT BE DISCLOSED TO ANYONE, OTHER THAN CW INDUSTRIES PERSONNEL, WITHOUT WRITTEN AUTHORIZATION FROM CW INDUSTRIES INCORPORATED, SOUTHAMPTON, PENNSYLVANIA USA.



Circuit diagram

Rating: 6A 125/250V~μ 5E4
6A 3~ 48VDC μ 3E4

Contact Resistance: 50mΩ (max.) initial
Insulation Resistance: 100MΩ (min.)

Actuator Shape: Flat

Type: SPST, Momentary

Body Material: Stainless Steel

Actuator: Stainless Steel

Lens Style: Ring

LED Color: Red, Green, Blue

LED Voltage: 3VDC

Lens Color: White Transparent

Dielectric Strength: 500VAC for 1 minute

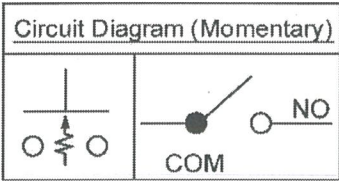
Mechanical Life: 1,000,000 cycles

Operation Force: 350g ± 150g

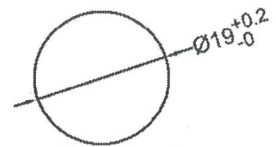
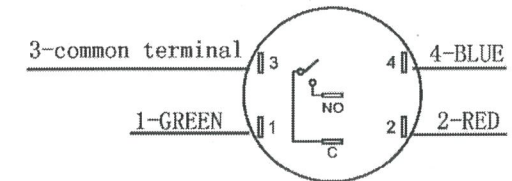
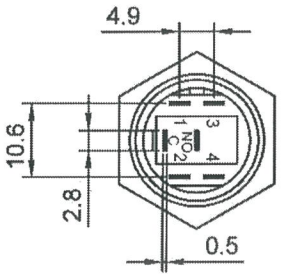
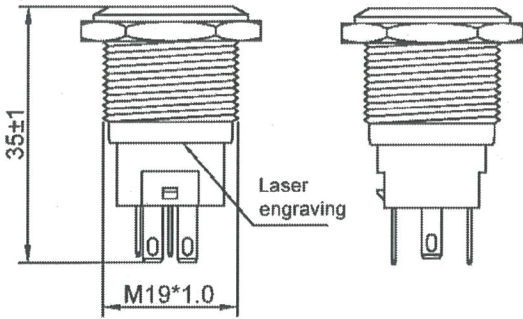
Total Travel: 3.2mm (max.)

Protection Level: IP68, IK10 (Above the panel)

Nut Torque: 5~14Nm



Accessories package	
Silicon o-ring	Hex nuts
Accessories are not locked when shipped	



Panel Cutout Ø19 mm
(Panel thickness : 10 mm MAX)

Order Chart											
Series		LED Voltage			Body Material		Terminal Type				
G	P	1	9	M	1	F	E	1	1	S	S
Body Type		LED & Lens Color			Lens Style		Circuit			Actuator Shape	

NOTE: TOLERANCES UNLESS OTHERWISE SPECIFIED : ± 0.5 (mm).

MASTER

PK-19M11FE11S-ANTB-CW

<p>Southampton, Pa. 18966 Tel 215.355.7080/www.cwind.com</p>	Date Drawn: DW 10/21/25	Rev. 0	Unit: mm	Checked By: <i>G. GULD</i>
	Title: ILLUMINATED 3V RED, GREEN, BLUE ANTI-VANDAL SWITCH		CW P/N: GPA19M11FE11SS	