

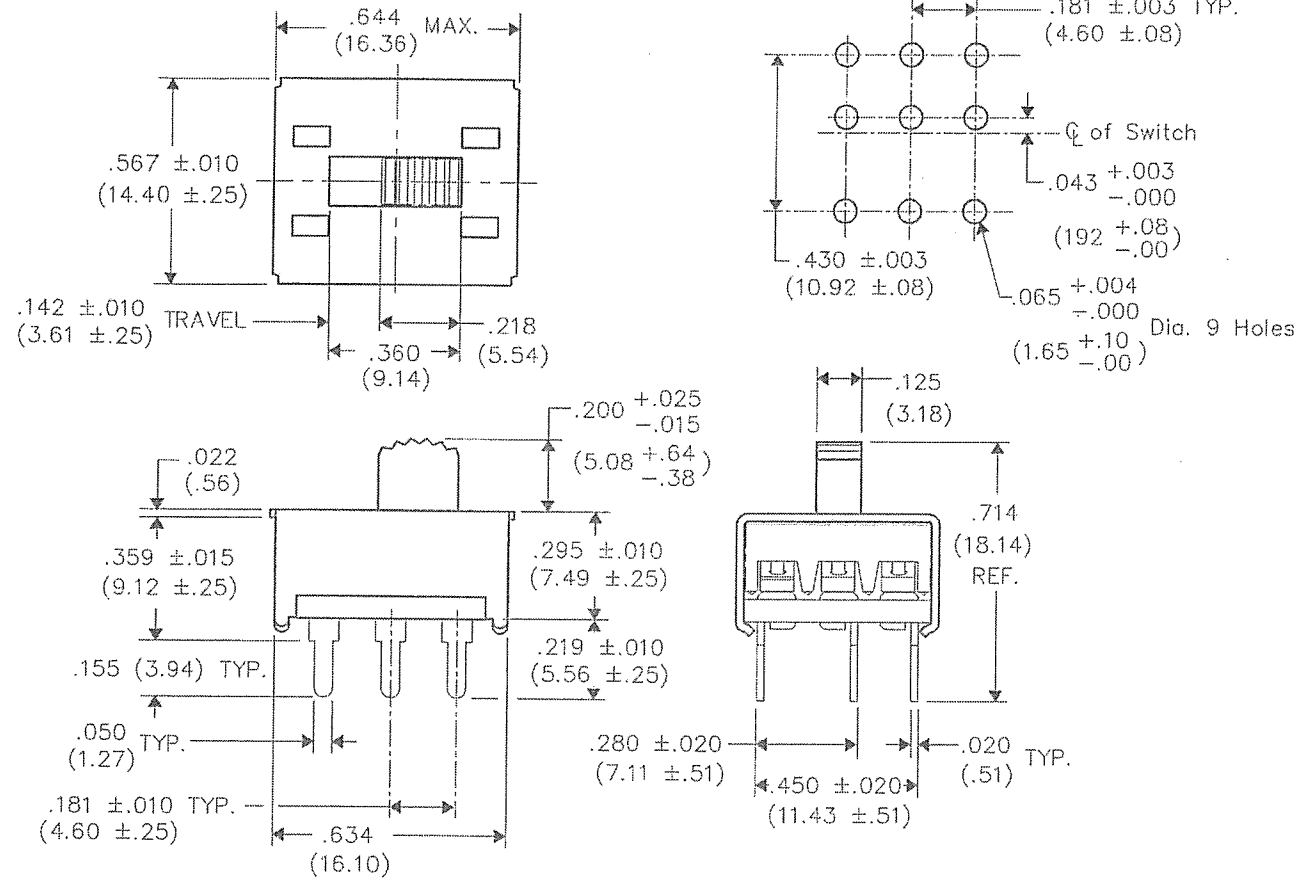
THIS INFORMATION IS CONFIDENTIAL AND PROPRIETARY TO CW INDUSTRIES INCORPORATED AND ITS AFFILIATES. IT MAY NOT BE DISCLOSED TO ANYONE, OTHER THAN CW INDUSTRIES PERSONNEL, WITHOUT WRITTEN AUTHORIZATION FROM CW INDUSTRIES INCORPORATED, SOUTHAMPTON, PENNSYLVANIA USA.

F
D
C
B
A

DIMENSIONS IN INCHES (MILLIMETERS)
 DO NOT SCALE DRAWING

Dwg. No.
GF-161-0005

P. C. LAYOUT ϕ of Switch



1 2 3 4 5 6 7 8 9 10

B-FORMAT 2002
REVISIONS
 RELEASED: DGW 7-12-13
 JAN 18 2013

GW INDUSTRIES		Southampton, Pa. 18966		Title:	
TOLERANCES UNLESS OTHERWISE SPECIFIED		METRIC		MINI SWITCH	
2 Place Decimal $\pm .010$	3 Place Decimal $\pm .005$	1 Place Dec. $\pm .25$ mm	2 Place Dec. $\pm .13$ mm	3P - D.T.	
Angles $\pm 1^\circ$				NO MOUNTING EARS	
Made for: CW IND.		Division:		SWITCH	
Drawn by: DGW 7-12-13		Checked by: <i>G. Guld 7-22-13</i>		Dwg. No.	
Approval: <i>G. Guld 7-22-13</i>				GF-161-0005	

MASTER