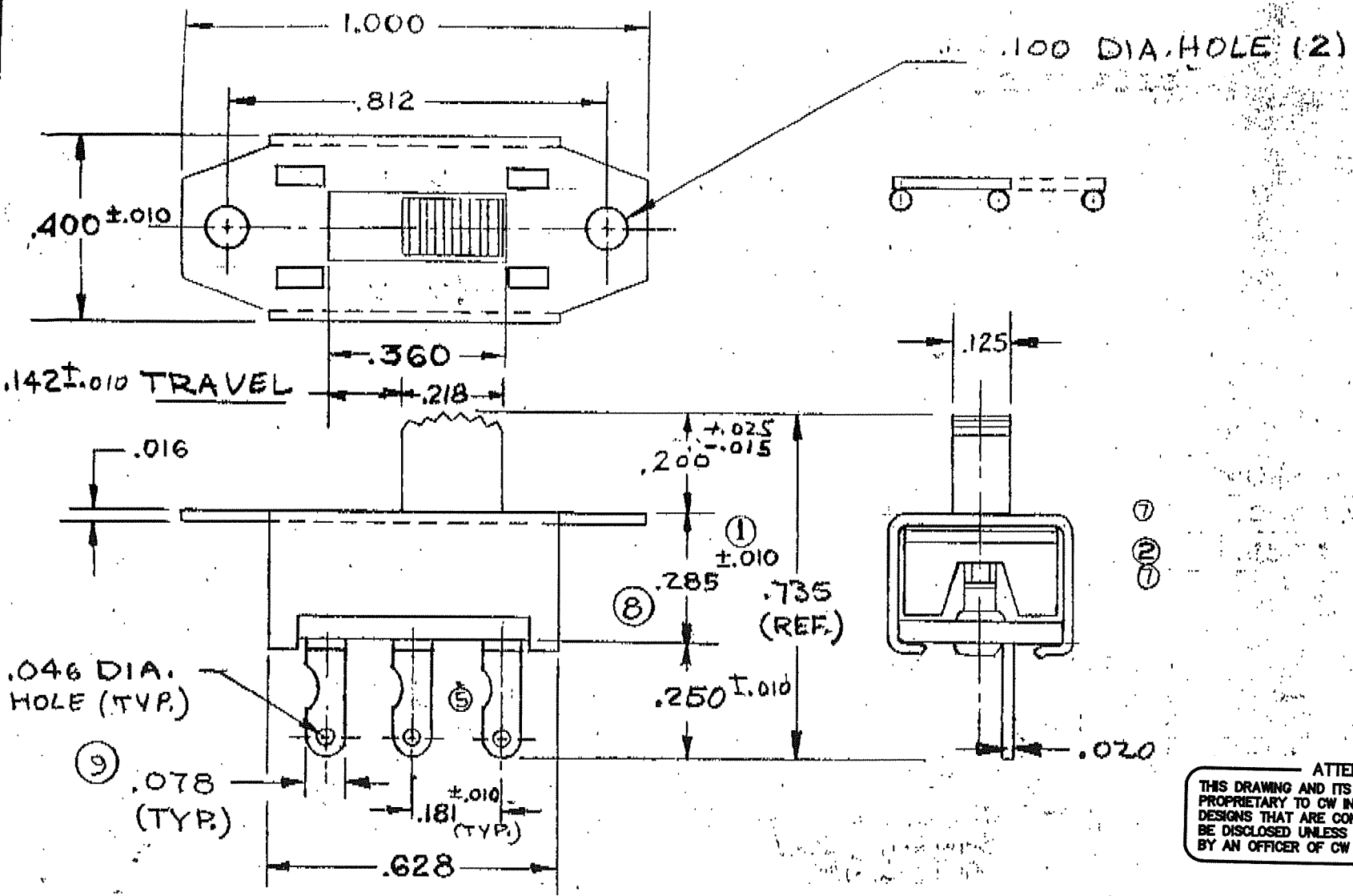


A GF124-0000



ATTENTION
 THIS DRAWING AND ITS ATTACHMENTS, IF ANY, ARE PROPRIETARY TO CW INDUSTRIES AND DESCRIBE DESIGNS THAT ARE CONFIDENTIAL AND MUST NOT BE DISCLOSED UNLESS AUTHORIZED, IN WRITING, BY AN OFFICER OF CW INDUSTRIES.

ALL SCREW THREADS TO BE CLASS 2 FIT (AMERICAN STANDARDS) UNLESS OTHERWISE SPECIFIED. DIMENSIONS ARE IN INCHES, AND INCLUDE THICKNESS OF PLATING. DO NOT SCALE DRAWING.

REVISIONS	0	1	2	3	4	5	6	7	8	9
ENGL. AP.	8-9-63									
ADDED	±.010 TOLERANCE TO .300 DIM.									
REMOVED	-1 12-10-63 V.A.B.									
	.170 ± .020 WAS									
	.250 ± .020 V.A.B. 3-30-65									
	TERMS WERE STAGGERED AT .170 ± .020 R.M. 5-6-66									
REVISED	TERMS P.S. 1-27-70									
	GF-124-000 DWS G-124 P.S. 8-7-70									
	T.O.S. WAS .010 3/15/77									
	ADDED .218									
	MAR 1 8 1970									
	DELETED .300 ± .010									
	ADDED .285 ± .010 (REF.) WAS ± .020									
	V.V. 7-17-73									
	JUL 30 1973									
	ADDED .078 (TYP.)									
	J.V. 8-28-73									

VARIATIONS ON FINISHED DIMENSIONS UNLESS OTHERWISE MARKED		
BASIC DIMENSIONS	FRACTIONAL DIMENSIONS	DECIMAL DIMENSIONS
UP TO 6	± 1/16	± .005
ABOVE 6 TO 24	± 1/32	± .010
ABOVE 24	± 1/16	± .015
ANGULAR DIMENSIONS		± 1/2°

SWIDGET
 S.P.D.T. Sub-Mini.
 FIRST MADE FOR CUL
 DRAWN BY V.A.B.
 CHECKED BY J.M.V.

Continental-Wirt Electronics Corp. GF-124-0000