

DIMENSIONS IN INCHES (MILLIMETERS)
DO NOT SCALE DRAWING

Dwg. No.
GC-536-0205

SPECIFICATIONS:

MATERIALS:

HOUSING & BASE - Nylon and or Glass Filled
Nylon 6/6 UL 94-V2 minimum

ACTUATOR - Nylon 6/6 UL 94-V2 minimum

MOVING CONTACT - Copper Alloy/Phos. Bronze Silver Plated

STATIONARY CONTACT - BeCu 174 Alloy/75µin. Silver Plated

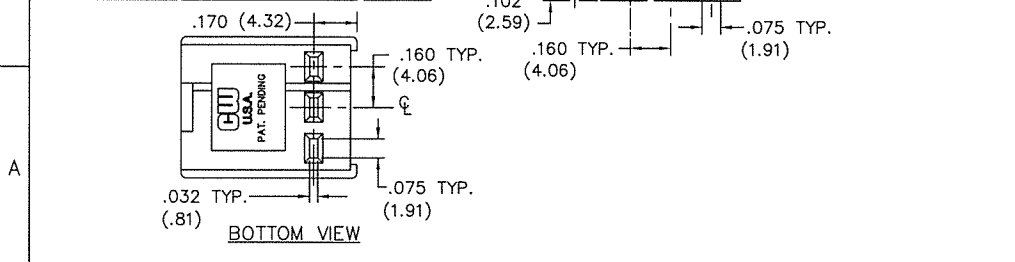
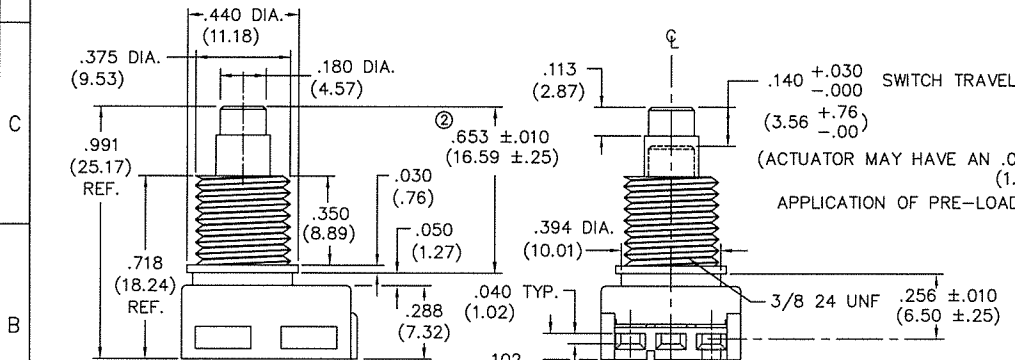
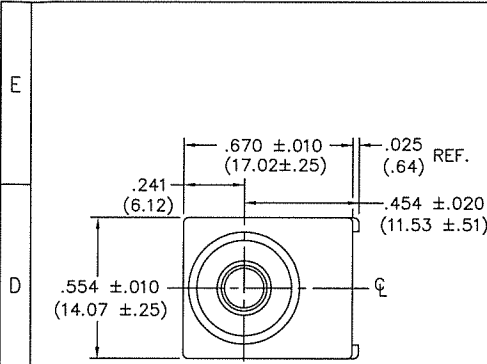
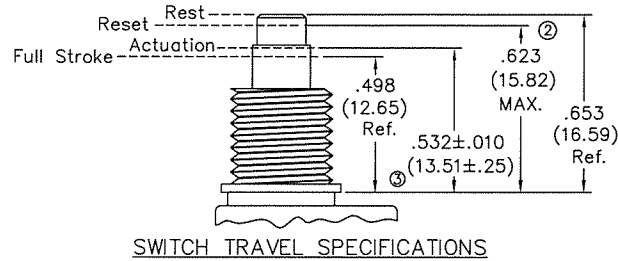
ELECTRICAL RATING - 1A. 125V.A.C.
3A. 14V.D.C.

MECHANICAL PERFORMANCE - 30,000 Cycles minimum
at Rated Load.

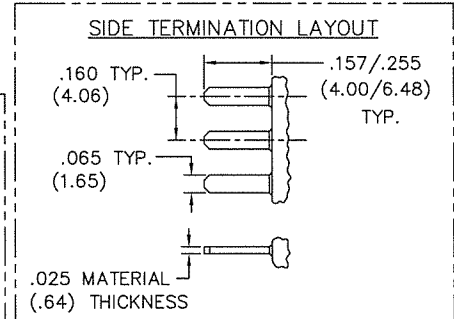
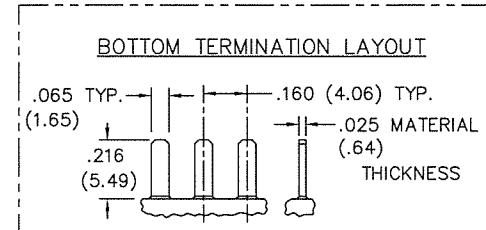
OPERATING FORCE - 17 - 24ozs. Typical,
4.6 - 6.6 Newtons Typical,

VOLTAGE DROP - .030V. MAX @ .7A

TERMINATION - Insert male tabs into switch housing
using side or bottom termination option. Refer
to termination option layout for dimensions."



APPLICATION OF PRE-LOAD TRAVEL



1 2 3 4 5 6 7 8 9 10

FORM-B3 REVISIONS	0	RELEASED. DGW 5-14-2002 CH 5-14-02
	1	.157/.255 TYP. WAS .250 TYP. IN SIDE TERMINATION LAYOUT. DGW 6-21-2002 CH 6-21-02
	2	.653±.010 WAS .653±.015 & .623 MAX. WAS .613. DGW 7-26-2002 CH 7-26-02
	3	.532±.010 WAS .530±.008 IN TRAVEL SPEC'S DGW 2-08-2005 CH FEB. 22, 2005

ATTENTION
THIS DRAWING AND ITS ATTACHMENTS, IF ANY, ARE
PROPRIETARY TO CW INDUSTRIES AND DESCRIBE
DESIGNS THAT ARE CONFIDENTIAL AND MUST NOT
BE DISCLOSED UNLESS AUTHORIZED, IN WRITING,
BY AN OFFICER OF CW INDUSTRIES.....

PDF File Made	CW INDUSTRIES Southampton, Pa. 18966		Title: SWITCH ASSEMBLY PUSH ON-PUSH OFF S.P.D.T.
	TOLERANCES UNLESS OTHERWISE SPECIFIED		Division: SWITCH
	2 Place Decimal ±.010 3 Place Decimal ±.005 Angles ±1°	METRIC 1 Place Dec. ±.25mm 2 Place Dec. ±.13mm	Dwg. No. GC-536-0205
	Made for: CW IND. Drawn by: DGW 5-14-2002 Checked by: GG 5-14-02 Approval: CH 5-14-02		