

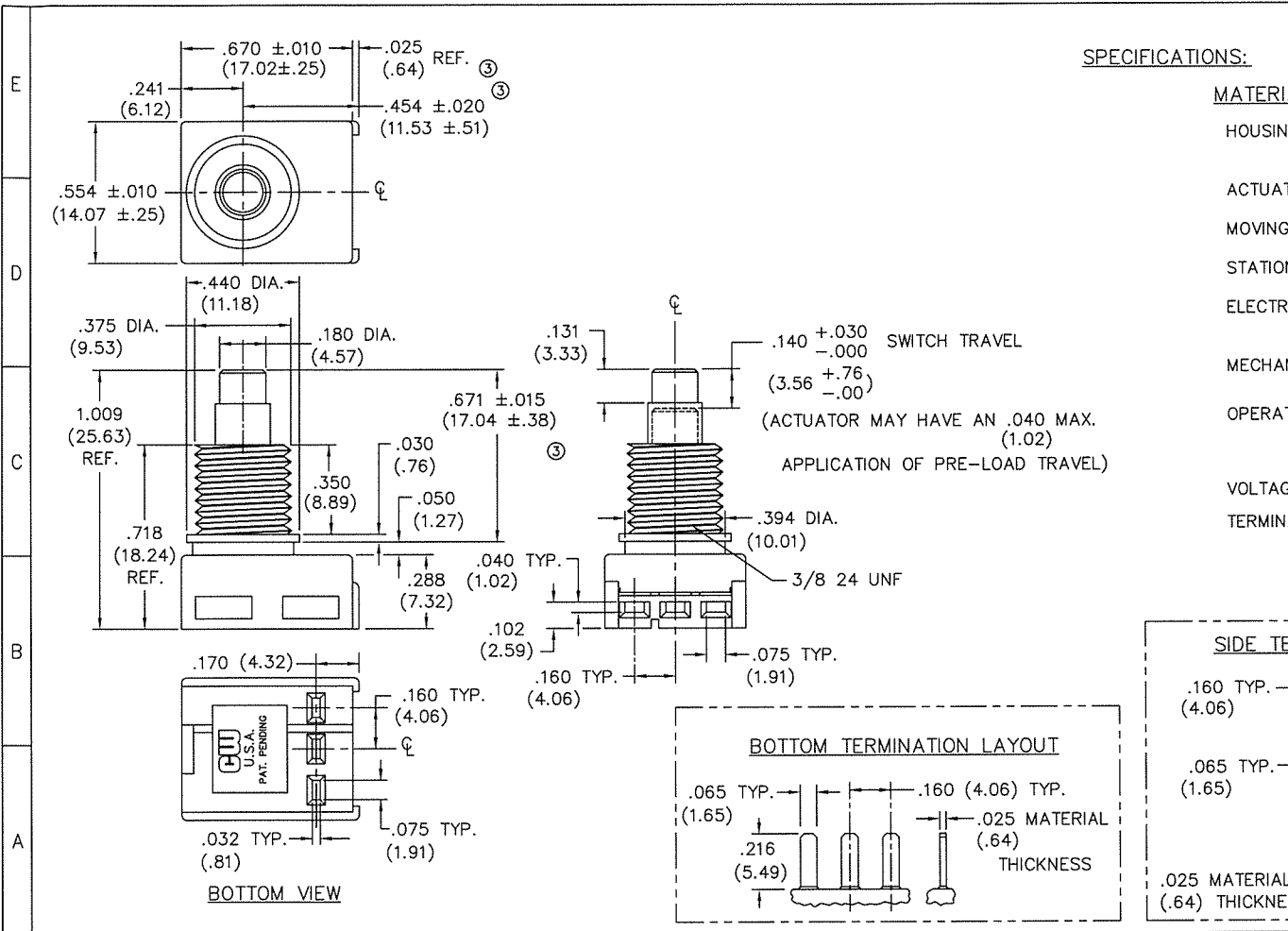
DIMENSIONS IN INCHES (MILLIMETERS)  
DO NOT SCALE DRAWING .....

Dwg. No.  
**GC-536-0203**

**SPECIFICATIONS:**

**MATERIALS:**

- HOUSING & BASE - Nylon and or Glass Filled  
Nylon 6/6 UL 94-V2 minimum
- ACTUATOR - Nylon 6/6 UL 94-V2 minimum
- MOVING CONTACT - Copper Alloy/Phos. Bronze Silver Plated
- STATIONARY CONTACT - BeCu 174 Alloy/75µin. Silver Plated
- ELECTRICAL RATING - 1A. 125V.A.C.  
3A. 14V.D.C.
- MECHANICAL PERFORMANCE - 30,000 Cycles minimum  
at Rated Load.
- OPERATING FORCE - 17 - 24ozs. Typical,  
4.6 - 6.6 Newtons Typical,
- VOLTAGE DROP - .030V. MAX @ .7A
- TERMINATION - Insert male tabs into switch housing  
using side or bottom termination option. Refer  
to termination option layout for dimensions.



FORM-B3	1	2	3	4	5	6	7	8	9	10
<b>REVISIONS</b>	0	1	2	3	4					
RELEASED. DGW 8-22-2001 CH 8-21-01	1	2	3	4						
REDRAWN. ADDED METRIC DIMENSIONS IN ( ) & 5.5 NEWTONS TYP. WAS 20 OZ. TYP. IN OPERATING FORCE. DGW 2-15-2002 CH 2-15-2002	2	3	4							
CHANGED OPERATING FORCES. DGW 4-05-2002 GG	3	4								
REDRAWN. ADDED .454±.020, .671±.015, REF. TO .025 & REMOVED .160±.020, .010 DGW 5-03-2002 CH 5-13-02	4									
17-24ozs, 4.6-6.6 NEWTONS WAS 10-29ozs, 2.8-8.1 NEWTONS IN OPERATING FORCE NOTE. DGW 3-11-2003 CH 3/11/03										
<b>ATTENTION</b> <b>THIS DRAWING AND ITS ATTACHMENTS, IF ANY, ARE PROPRIETARY TO CW INDUSTRIES AND DESCRIBE DESIGNS THAT ARE CONFIDENTIAL AND MUST NOT BE DISCLOSED UNLESS AUTHORIZED, IN WRITING, BY AN OFFICER OF CW INDUSTRIES.....</b>										

<b>PDF File Made</b>	<b>CW INDUSTRIES</b> Southampton, Pa. 18966		Title: <b>SWITCH ASSEMBLY PUSH ON-PUSH OFF S.P.D.T.</b>	
	TOLERANCES UNLESS OTHERWISE SPECIFIED		METRIC	
	2 Place Decimal ±.010	3 Place Decimal ±.005	1 Place Dec. ±.25mm	2 Place Dec. ±.13mm
	Angles ..... ±1°			
Made for: CW IND.		Division: SWITCH		
Drawn by: DGW 8-22-2001		Dwg. No. <b>GC-536-0203</b>		
Checked by: CH 5-13				
Approval: CH 5-13-02				