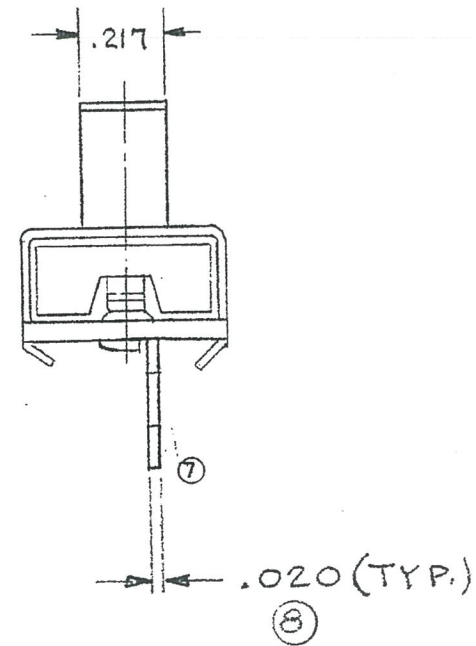
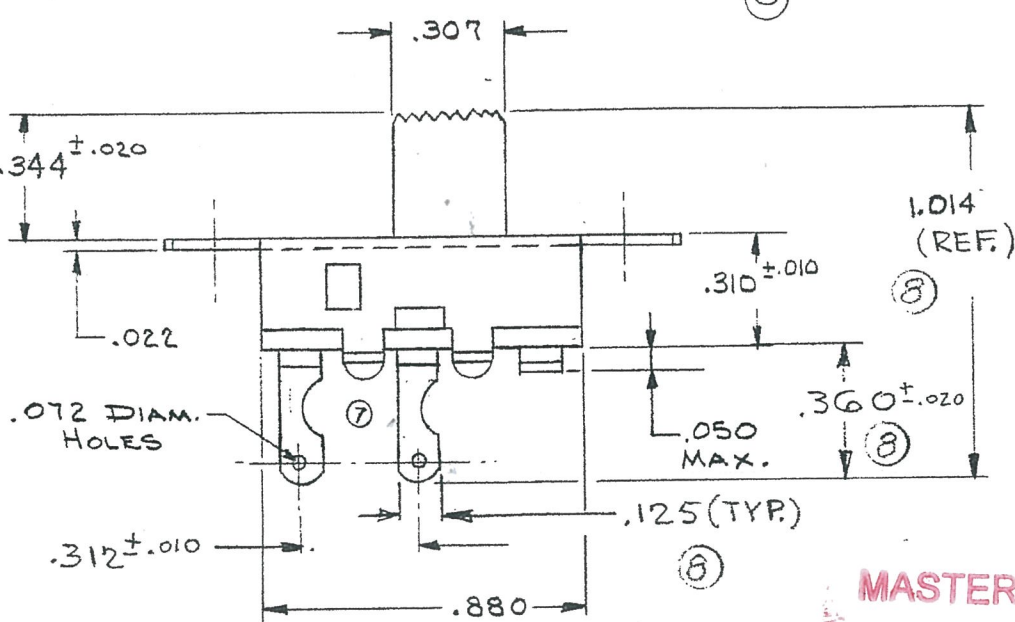


ATTENTION
 THIS DRAWING AND ITS ATTACHMENT, IF ANY, ARE PROPRIETARY TO CW INDUSTRIES AND DESCRIBE DESIGNS THAT ARE CONFIDENTIAL AND MUST NOT BE DISCLOSED UNLESS AUTHORIZED, IN WRITING, BY AN OFFICER OF CW INDUSTRIES.....

A G-331-0000



MASTER

.550 WAS .544
 J.V. 9-13-73

MASTER

ALL SCREW THREADS TO BE CLASS 2 FIT (AMERICAN STANDARDS) UNLESS OTHERWISE SPECIFIED. DIMENSIONS ARE IN INCHES, AND INCLUDE THICKNESS OF PLATING. DO NOT SCALE DRAWING.

REVISIONS	2
ENG. AP.	REDRAWN
	.544 WAS .553
	.465 WAS .469
	.310 WAS .312
	.650 WAS .680
	.970 WAS 1.000
	.280 WAS .245
	V.J.B. 9-3-65
	ADDED Tol. To .544, .3
	".072 DIAM.?
	344 WAS .320, .670
	WAS .650, 1.014 WAS
	.970 & .240 WAS .280
	Rm 3-16-66
	REVISIONS WERE
	STAGGERED AT
	240 TO 205 A-66
	WAS 2850 4
	11-21-66
	.140 WAS .136
	12-4-67 J.K.
	STRAIGHT TERM. ADDED
	1/2 MOON TERM.
	P.S. 4-22-70 FJU
	1.014 (REF) WAS 1.014 ± .020
	ADDED: .020, .125
	.158 TRAVEL
	J.V. 8-31-73

VARIATIONS ON FINISHED DIMENSIONS UNLESS OTHERWISE MARKED		
BASIC DIMENSIONS	FRACTIONAL DIMENSIONS	DECIMAL DIMENSIONS
UP TO 6	± 1/64	± .005
ABOVE 6 TO 24	± 1/32	± .010
ABOVE 24	± 1/16	± .015
ANGULAR DIMENSIONS		± 1/2°

SWITCH *Master*
 SPRING RETURN
 S.P.S.T.
 FIRST MADE FOR
 DRAWN BY V.J.B. 9-3-65
 CHECKED BY J.M.V.

Continental-Wirt Electronics Corp. G-331-0000