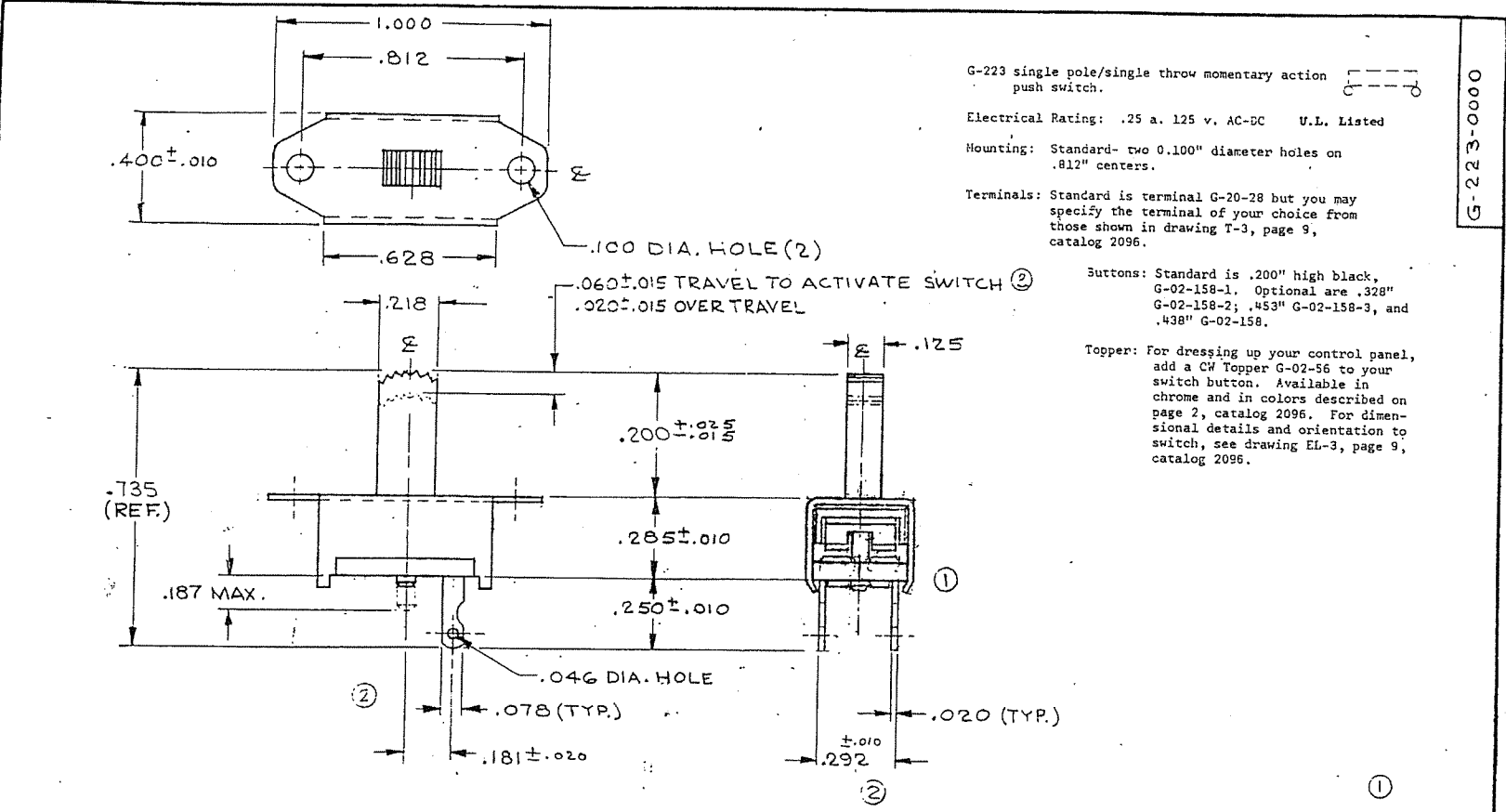


THIS IS A REDUCTION  
DO NOT SCALE



G-223 single pole/single throw momentary action push switch.

Electrical Rating: .25 a. 125 v. AC-DC U.L. Listed

Housing: Standard- two 0.100" diameter holes on .812" centers.

Terminals: Standard is terminal G-20-28 but you may specify the terminal of your choice from those shown in drawing T-3, page 9, catalog 2096.

Buttons: Standard is .200" high black, G-02-158-1. Optional are .328" G-02-158-2; .453" G-02-158-3, and .438" G-02-158.

Topper: For dressing up your control panel, add a CW Topper G-02-56 to your switch button. Available in chrome and in colors described on page 2, catalog 2096. For dimensional details and orientation to switch, see drawing EL-3, page 9, catalog 2096.

G-223-0000

REVISIONS	DATE	BY	DESCRIPTION
0	11/17/73	J.V.	ENG. AP. 11/17/73
1	1/10/74	J.V.	END VIEW & C.M.D. ADDED: PUSH BUTTON J.V. 11-30-73
2	3/10/74	J.V.	REVISED TERMINALS LOCATION J.V. 1-31-74
3	4/17/74	J.V.	ADDED TO ACTUATOR SWITCH J.V. 4-2-74
	APR 3 1974	J.V.	

DIMENSIONS ARE IN INCHES. DO NOT SCALE DRAWING.	
P.D.C. File Made	VARIATIONS ON FINISHED DIMENSIONS UNLESS OTHERWISE MAPED
	TOLERANCES UNLESS OTHERWISE SPECIFIED
	2 PLACE DECIMAL ± .010
	3 PLACE DECIMAL ± .005
	FRACTIONS ± 1/64
ANGULAR DIMENSIONS ± 1/2°	

BULLETIN 2096-4

FIRST MADE FOR

DRAWN BY J.V.

DATE DRAWN 11-5-73

CHECKED BY

**GIV INDUSTRIES**  
WARMINSTER, PA 18974

G-223-0000