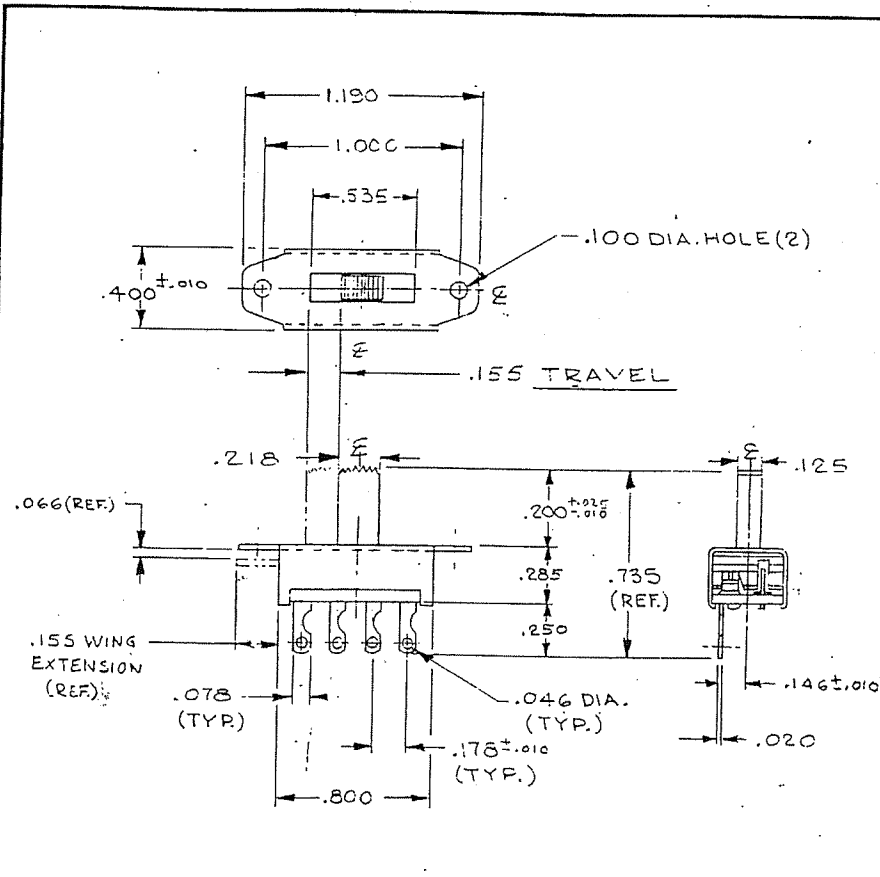
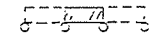


THIS IS A REDUCTION  
DO NOT SCALE



G-173 - single pole/three position  
spring return each end to  
center.



Electrical Rating:  
0.5 amp AC-DC at 125 v. U.L. Listed

Mounting:  
standard - two 0.100" diameter holes on 1.000" centers.

Terminals:  
Standard is terminal G-20-22, but you may specify the  
terminal of your choice from those shown in drawing  
T-3, page 9, catalog 2096.

Buttons:  
Standard is .200" high black G-02-157-1.  
Optional are .328" G-02-157-2, .453" G-02-157-3, and .438"  
G-02-157.

Toppers:  
For dressing up your control panel, add a CW Topper  
G-02-56 to your switch button. Available in chrome  
and in colors described on page 2, catalog 2096.  
For dimensional details and orientation to switch,  
see drawing EL-3, page 9, catalog 2096.

G-173-0000

0	DATE AP. 1/17/64	REV. 1
1	DATE AP. 1/17/64	REV. 2
2	DATE AP. 1/17/64	REV. 3
3	DATE AP. 1/17/64	REV. 4
4	DATE AP. 1/17/64	REV. 5
5	DATE AP. 1/17/64	REV. 6
6	DATE AP. 1/17/64	REV. 7
7	DATE AP. 1/17/64	REV. 8
8	DATE AP. 1/17/64	REV. 9
9	DATE AP. 1/17/64	REV. 10

**ATTENTION**  
THIS DRAWING AND ITS ATTACHMENTS, IF ANY, ARE  
PROPRIETARY TO CW INDUSTRIES AND DESCRIBE  
DESIGNS THAT ARE CONFIDENTIAL AND MUST NOT  
BE DISCLOSED UNLESS AUTHORIZED, IN WRITING,  
BY AN OFFICER OF CW INDUSTRIES.

PDF File Made	DIMENSIONS ARE IN INCHES. DO NOT SCALE DRAWING.	
	VARIATIONS IN FINISHED DIMENSIONS UNLESS OTHERWISE MARKED	
	TOLERANCES UNLESS OTHERWISE SPECIFIED	
	2 PLACE DECIMAL	± .010
3 PLACE DECIMAL	± .008	
FRACTIONS	± 1/64	
ANGULAR DIMENSIONS	± 1/2°	
BULLETIN 2096-3		
FIRST MADE FOR		
DRAWN BY J. V.		
DATE DRAWN		
CHECKED BY		
CW INDUSTRIES WARMUNSTER, PA. 18974		
G-173-0000		