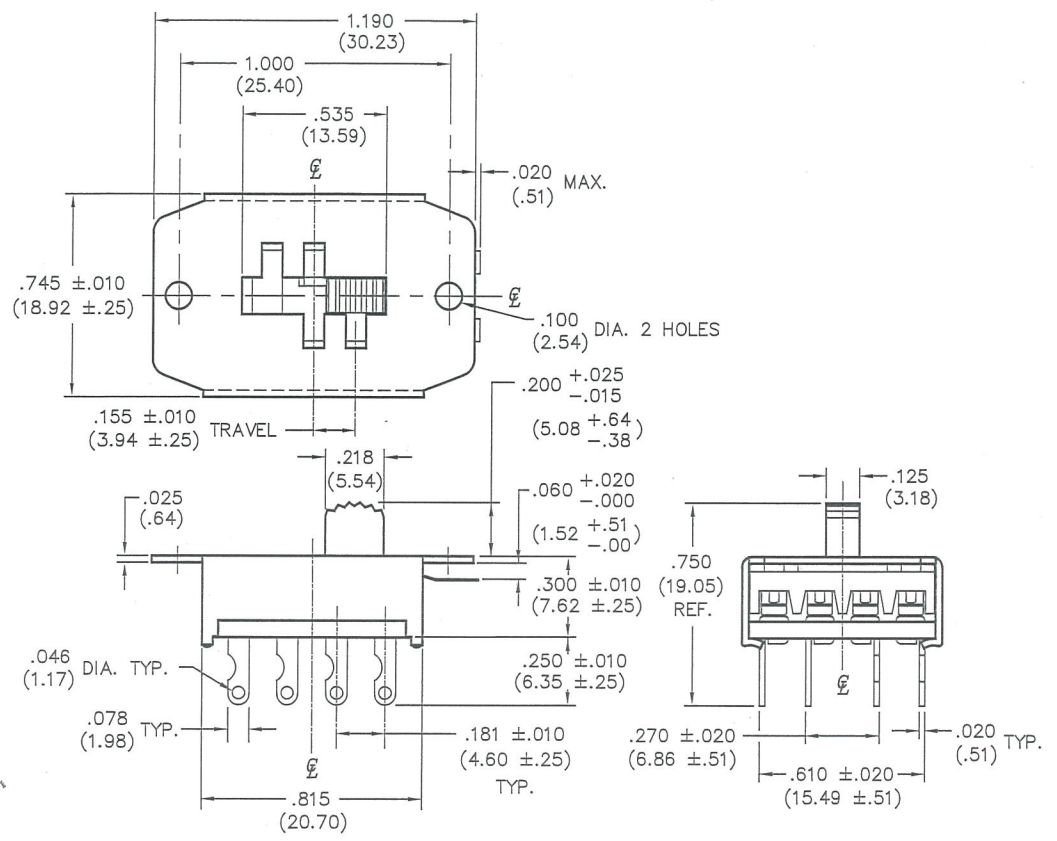


F
 D
 C
 B
 A

THIS INFORMATION IS CONFIDENTIAL AND PROPRIETARY TO CW INDUSTRIES INCORPORATED AND ITS AFFILIATES. IT MAY NOT BE DISCLOSED TO ANYONE OTHER THAN CW INDUSTRIES PERSONNEL WITHOUT WRITTEN AUTHORIZATION FROM CW INDUSTRIES INCORPORATED, SOUTHAMPTON, PENNSYLVANIA, USA.

DIMENSIONS IN INCHES (MILLIMETERS)
 DO NOT SCALE DRAWING
 Dwg. No. **G-169L-0000**



MATERIAL:
 Actuator: Nylon 6/6, Color - Black
 Housing: Cold Rolled Steel, Finish - Zinc Plated
 Base: NEMA XP
 Moving & Stationary Contacts/Terminals:
 Copper Alloy - Silver Plated

Ratings:
 0.5A AC DC 125 V
 UL Listed

1 2 3 4 5 6 7 8 9 10

B-FORMAT 2002
REVISIONS
 0
 RELEASED: DGW 2/16/24
 [Signature] 2/20/24

CW INDUSTRIES
 Southampton, Pa. 18966
TOLERANCES UNLESS OTHERWISE SPECIFIED
 2 Place Decimal ±.010 METRIC
 3 Place Decimal ±.005 1 Place Dec. ±.25mm
 Angles ±1' 2 Place Dec. ±.13mm
 Made for: CW IND.
 Drawn by: DGW 2/16/24
 Checked by: G. BULD 2-20-24
 Approved: [Signature] 2/20/24

Title: **MINI SLIDE SWITCH ASSEMBLY 4P/3POS**
 Division: **SWITCH**
 Dwg. No. **G-169L-0000**

MASTER