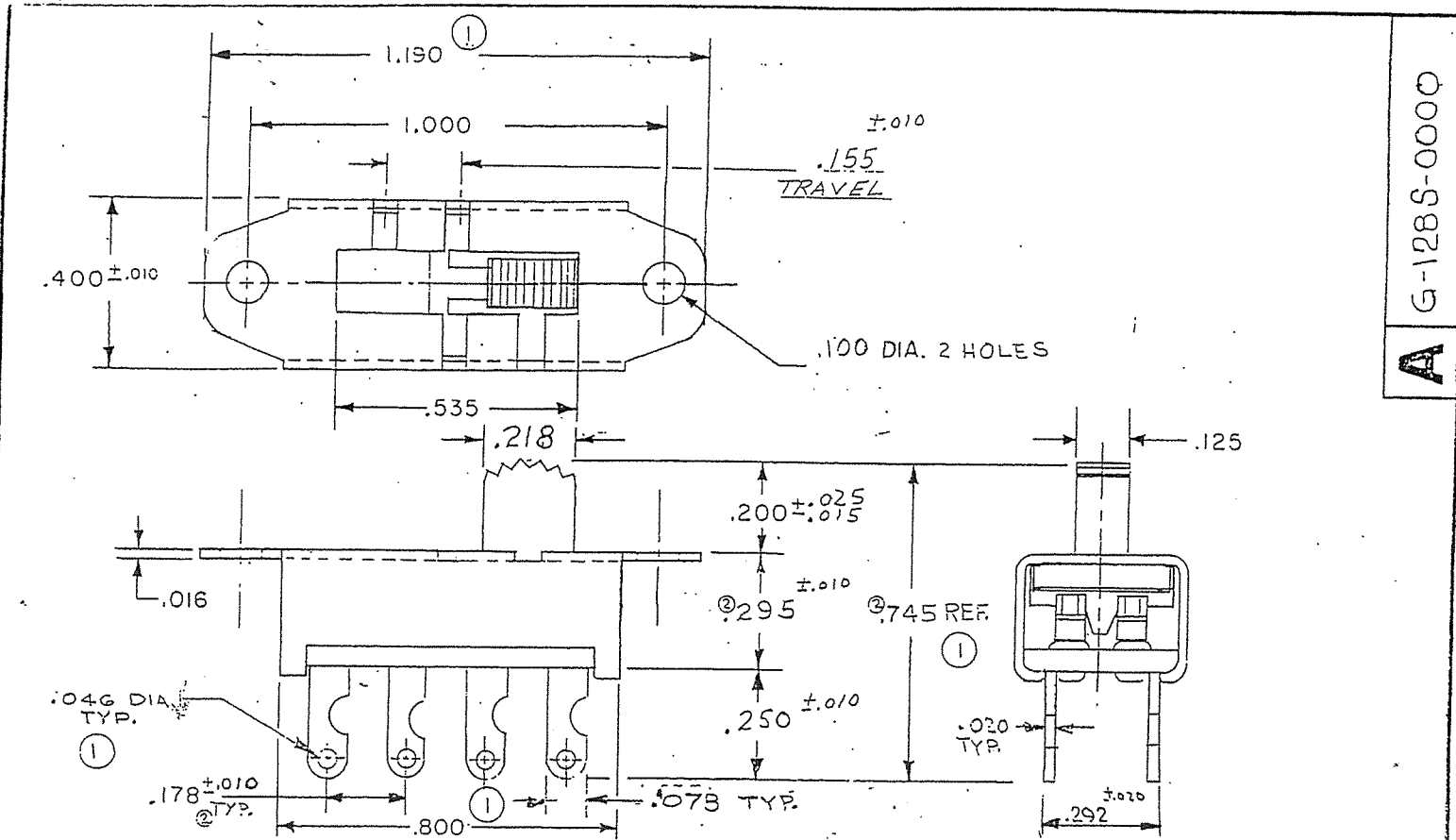


ATTENTION
 THIS DRAWING AND ITS ATTACHMENTS, IF ANY, ARE
 PROPRIETARY TO CW INDUSTRIES AND DESCRIBE
 DESIGNS THAT ARE CONFIDENTIAL AND MUST NOT
 BE DISCLOSED UNLESS AUTHORIZED, IN WRITING,
 BY AN OFFICER OF CW INDUSTRIES.....



ALL SCREW THREADS TO BE CLASS 2 FIT (AMERICAN STANDARDS) UNLESS OTHERWISE SPECIFIED. DIMENSIONS ARE IN INCHES, AND INCLUDE THICKNESS OF PLATING. DO NOT SCALE DRAWING.

A G-1285-0000

REVISIONS	1	2
0	ENG. AP. 8-1-63	
	DELETED: $\pm .010$	
	ADDED: .046 DIA. (TYP)	
	.735 (REF) WAS	
	.735 $\pm .020$	
	J.V. 7-18-73	
	J.V. 3-0-77	
	ADDED: .016	
	ADDED: .178	
	ADDED: TYP. TO .178	
	L.W. 6-8-77	

VARIATIONS ON FINISHED DIMENSIONS UNLESS OTHERWISE MARKED		
BASIC DIMENSIONS	FRACTIONAL DIMENSIONS	DECIMAL DIMENSIONS
UP TO 6	$\pm \frac{1}{24}$	$\pm .005$
ABOVE 6 TO 24	$\pm \frac{1}{12}$	$\pm .010$
ABOVE 24	$\pm \frac{1}{8}$	$\pm .015$
ANGULAR DIMENSIONS Δ		$\pm 1/2^\circ$

SWIDGET
 D.P. 3 POS.
 FIRST MADE FOR M
 DRAWN BY D.E. 3-21-64
 CHECKED BY J.F.

PDF File Made

Continental-Wirt Electronics Corp. G-1285-0000