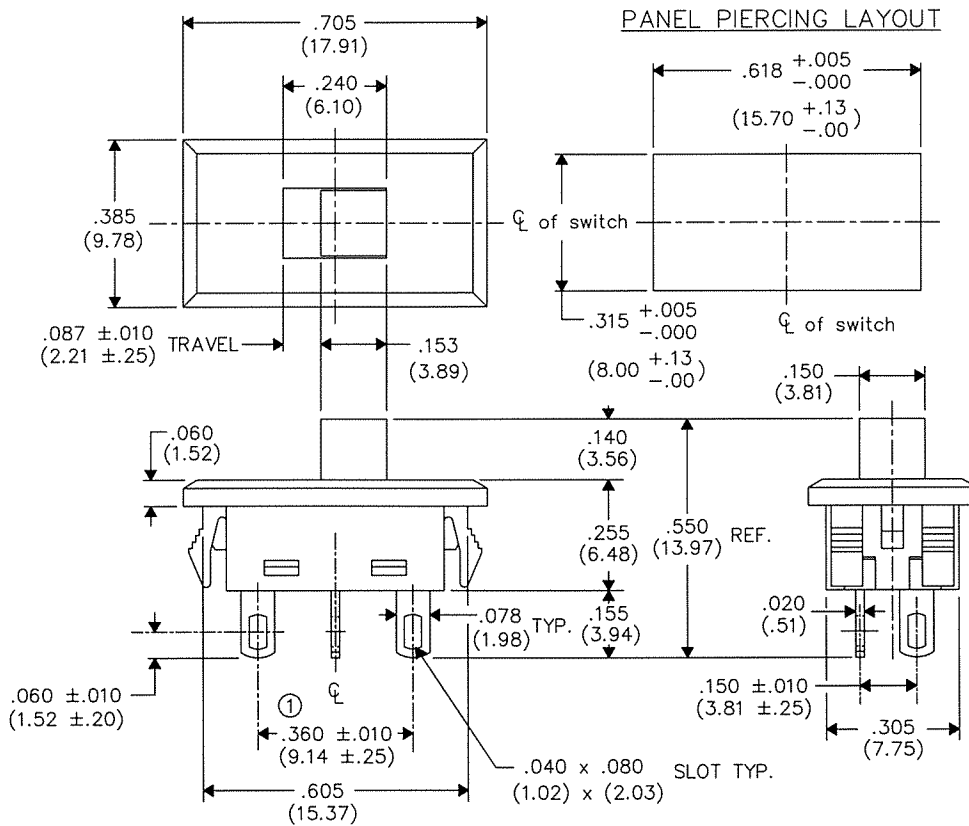


DIMENSIONS IN INCHES (MILLIMETERS)  
DO NOT SCALE DRAWING .....

Dwg. No.

G-107-SI-0511



SPECIFICATIONS AND OPTIONAL FEATURES

TYPE	CIRCUIT	ELECTRICAL RATING	UL & CSA
G-107-SI-0511	SPDT	.5A AC DC 125V	APPROVED

BUTTON OPTIONS

LENGTH	PART NUMBER	COLOR
.140 (3.56mm)	G-02-240-1 is Standard	BLACK
.200 (5.08mm)	G-02-240-2	BLACK
.250 (6.35mm)	G-02-240-3	BLACK
.250 (6.35mm)	G-02-240-4	Blue
.250 (6.35mm)	G-02-240-5	Red

TERMINALS

Standard solder terminal also mates with AMP connector 62343-1.

MOUNTING

Snaps directly into panel having hole piercing as shown.  
Designed for panel thickness of .047, .062, .078 and .093.

FORM-B

REVISIONS

0	
1	.360 ± .010 WAS .400 ± .010 AND 9.14 ± .25 WAS 10.16 ± .25. NM 7-24-85 JUL. 28.1986

**ATTENTION**

THIS DRAWING AND ITS ATTACHMENTS, IF ANY, ARE PROPRIETARY TO CW INDUSTRIES AND DESCRIBE DESIGNS THAT ARE CONFIDENTIAL AND MUST NOT BE DISCLOSED UNLESS AUTHORIZED, IN WRITING, BY AN OFFICER OF CW INDUSTRIES.....

**CW INDUSTRIES**  
Southampton, Pa. 18966

TOLERANCES UNLESS OTHERWISE SPECIFIED  
2 Place decimal ±.010 METRIC  
3 Place decimal ±.005 1 Place dec. ±.25mm  
Angles ..... ± 1° 2 Place dec. ±.13mm

Made for: CW  
Drawn by: B.DeRosier 1-4-85  
Checked by: CH 1-7-85  
Approval: GZ 1-8-85

Title:

SNAP-IN  
SLIDE SWIDGET JR.  
ASSEMBLY  
S.P. - D.T.

Division:

SWITCH

Dwg. No.

G-107-SI-0511