

DIMENSIONS IN INCHES (MILLIMETERS)  
DO NOT SCALE DRAWING .....

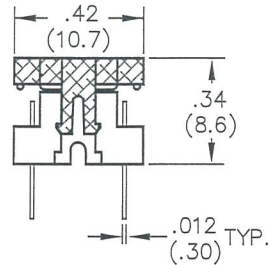
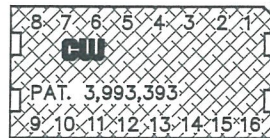
Dwg. No.

CWR-130-XX-0002

F  
D  
C  
B  
A  
 THIS INFORMATION IS CONFIDENTIAL AND PROPRIETARY TO CW INDUSTRIES INCORPORATED AND ITS AFFILIATES. IT MAY NOT BE DISCLOSED TO ANYONE OTHER THAN CW INDUSTRIES PERSONNEL, WITHOUT WRITTEN AUTHORIZATION FROM CW INDUSTRIES INCORPORATED, SOUTHAMPTON, PENNSYLVANIA, USA.

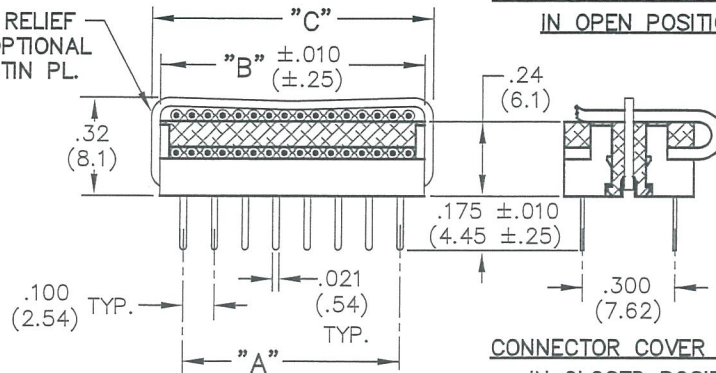
NOTCHED CORNER ORIENTS  
No. 1 CONTACT LOCATION.  
(16 CONTACT POSITIONS SHOWN; ALSO  
AVAILABLE WITH 14 POSITIONS.)

TOP VIEW NO CABLE OR  
STRAIN RELIEF SHOWN



CONNECTOR COVER SHOWN  
IN OPEN POSITION

STRAIN RELIEF  
STRAP—OPTIONAL  
STEEL—TIN PL.



CONNECTOR COVER SHOWN  
IN CLOSED POSITION

**MATERIALS:**

PLASTIC PARTS — UL94V-0 Thermoplastic (blue), flame retardant.  
CONTACTS — Phosphor Bronze, Std.  
CONTACT PLATING — .000050 Au./0.000050 Ni (min.)

**OPERATING STANDARDS:**

TEMPERATURE RATING — 125°C.  
CONTACT RATING — 1 Ampere.  
DIELECTRIC STRENGTH — Over 500 V.D.C. AT SEA LEVEL.  
CONDUCTORS ACCEPTED — 28-30 AWG solid or stranded.

Meets MIL Spec.: M83503/6

CONNECTOR DIMENSIONS				MIL-C- M83503/6
No. of Solder Posts	A	B	C	
14	.60 (15.2)	.754 (19.2)	.81 (20.6)	-01
16	.70 (17.8)	.854 (21.7)	.91 (23.1)	-02

CUSTOMER DRAWING

B-FORMAT 2002  
REVISIONS  
1  
Redrawn w/new format & updated title info, DWG 2/29/24  
3/1/24

PDF MADE	<b>CW INDUSTRIES</b> Southampton, Pa. 18966		Title: DIP CONNECTOR	
	TOLERANCES UNLESS OTHERWISE SPECIFIED			
	2 Place Decimal ±.010	METRIC		NO. CONTS. PER
	3 Place Decimal ±.005	1 Place Dec. ±.25mm	2 Place Dec. ±.13mm	CONN. DIM. CHART
Made for: CW IND.		Division: CONNECTOR		
Drawn by: DGW 2/29/24		Dwg. No. CWR-130-XX-0002		
Checked by: B. GOLD 3-1-24				
Approval: [Signature] 3/1/24				

MASTER