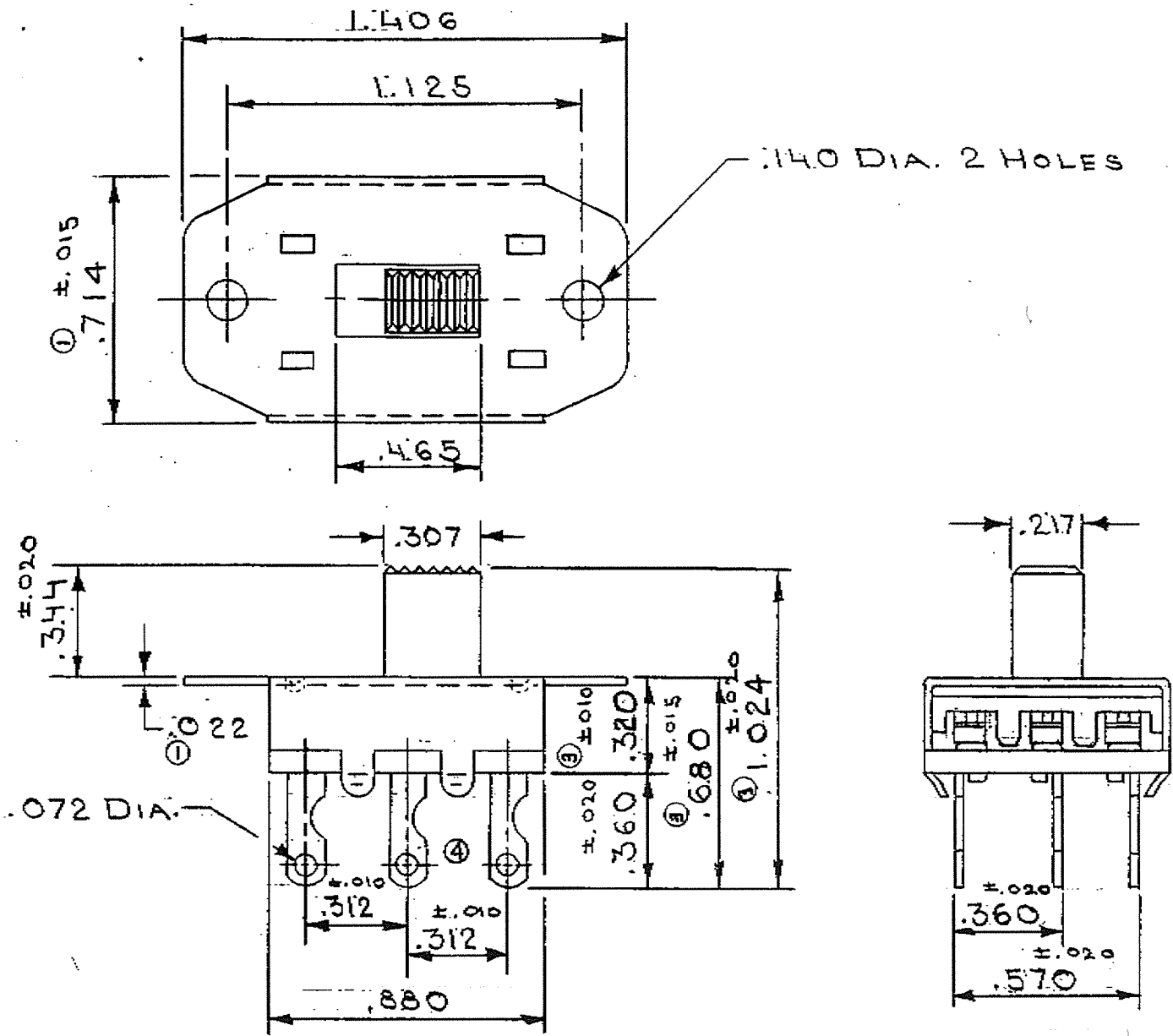


GF-361-0000



ATTENTION
 THIS DRAWING AND ITS ATTACHMENT, IF ANY, ARE PROPRIETARY TO CW INDUSTRIES AND DESCRIBE DESIGNS THAT ARE CONFIDENTIAL AND MUST NOT BE DISCLOSED UNLESS AUTHORIZED, IN WRITING, BY AN OFFICER OF CW INDUSTRIES.....

ALL SCREW THREADS TO BE CLASS 2 FIT (AMERICAN STANDARDS) UNLESS OTHERWISE SPECIFIED. DIMENSIONS ARE IN INCHES. DO NOT SCALE DRAWING.

REVISIONS	0	1	2	3	4
ENG. AP.	8-10-67				
WAS.	T30,030,330				
	.690 #1.034 TRM				
	10-9-67				
WAS.	Q 361				
	2-4-67 X				
WAS.	315,678,1019				
	2-5-68				
	ADDED 1/2 MOON				
	P.S. 4-21-70				

PDF File Made	VARIATIONS ON FINISHED DIMENSIONS UNLESS OTHERWISE MARKED		
	BASIC DIMENSIONS	FRACTIONAL DIMENSIONS	DECIMAL DIMENSIONS
	UP TO 6	± 1/64	± .005
	ABOVE 6 TO 24	± 1/32	± .010
ABOVE 24	± 1/16	± .015	
ANGULAR DIMENSIONS			± 1/2°

SLIDE SWITCH

3P DT

FIRST MADE FOR C-W

DRAWN BY *X* 6-29-67

CHECKED BY *En* 6-30-67

Continental-Wirt Electronics Corp. GF-361-0000

PHILA., PA. 19144