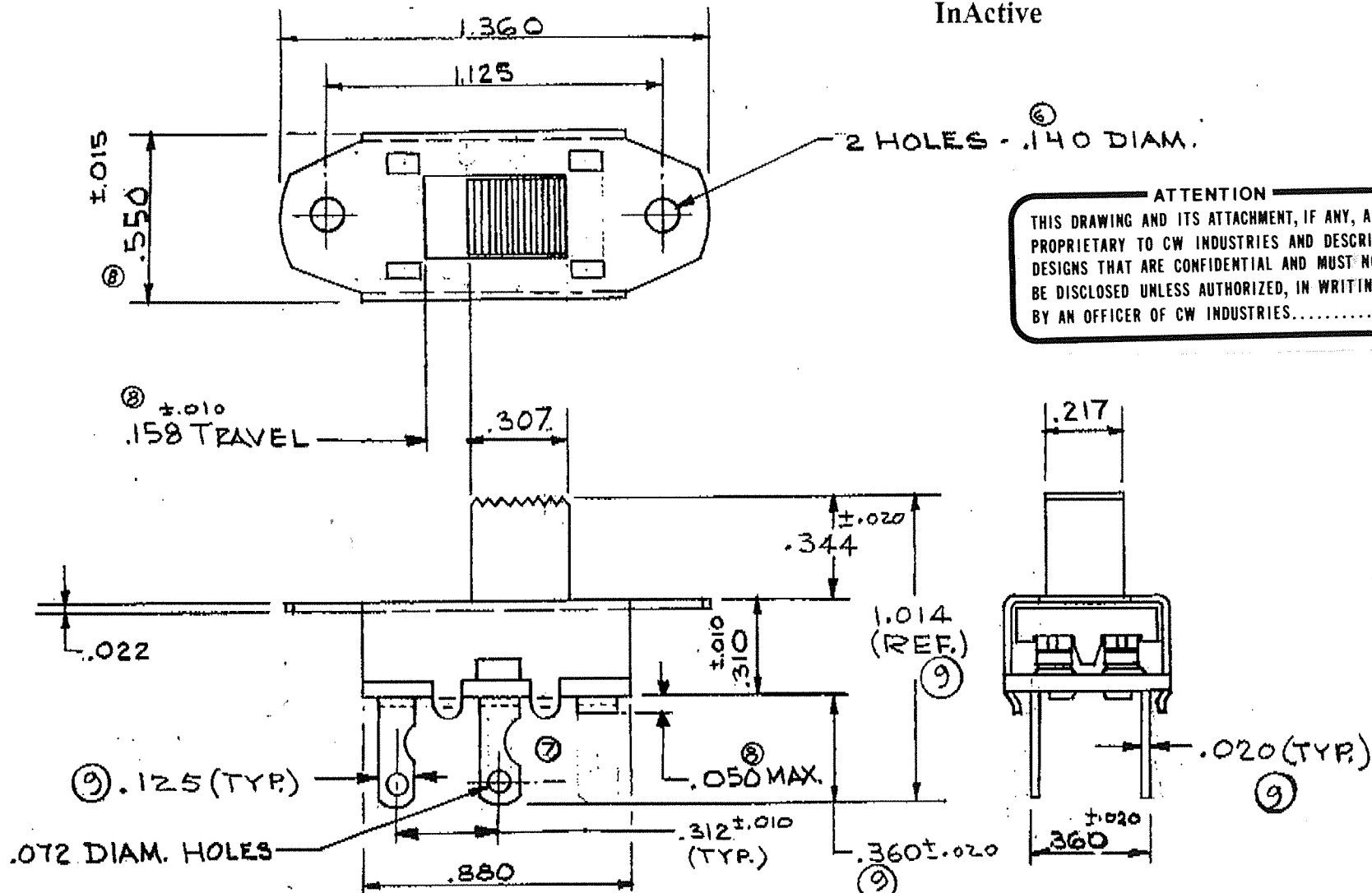


InActive

GF-325-0000



ATTENTION
THIS DRAWING AND ITS ATTACHMENT, IF ANY, ARE PROPRIETARY TO CW INDUSTRIES AND DESCRIBE DESIGNS THAT ARE CONFIDENTIAL AND MUST NOT BE DISCLOSED UNLESS AUTHORIZED, IN WRITING, BY AN OFFICER OF CW INDUSTRIES.....

ALL SCREW THREADS TO BE CLASS 2 FIT (AMERICAN STANDARDS) UNLESS OTHERWISE SPECIFIED. DIMENSIONS ARE IN INCHES. DO NOT SCALE DRAWING.

REVISIONS		VARIATIONS ON FINISHED DIMENSIONS UNLESS OTHERWISE MARKED			SWITCH D.P.-S.T.	
NO.	DESCRIPTION	BASIC DIMENSIONS	FRACTIONAL DIMENSIONS	DECIMAL DIMENSIONS	FIRST MADE FOR	
0	ENG. AP. 4-18-61	UP TO 6	± 1/64	± .005	DRAWN BY <u>G.H.</u>	
4	REDRAWN, ADDED CUT TERM., .344 WAS .320, .310 WAS 312; .670 WAS .680, 1.014 WAS 1.000, .480 WAS .435 - 3-21-66 R.M. #10	ABOVE 6 TO 24	± 1/32	± .010	CHECKED BY <u>E. JO.</u>	
5	WAS .480 <u>h</u> 11-21-66	ABOVE 24	± 1/16	± .015	Continental-Wirt Electronics Corp. PHILA., PA. 19144	
6	WAS .525 11-21-66	ANGULAR DIMENSIONS		± 1/2°		GF-325-0000
7	1.140 WAS .136 ADDED DETENT BUMPS 12-5-67					
8	ADDED 1/4 MOON TERM. P.S. 4-23-70					
9	1.014 (REF.) WAS 1.014 ±.020 ADDED .125 (TYP) .360 ±.020, .020 (TYP.) J.V. 8-23-73					

PDF File Made