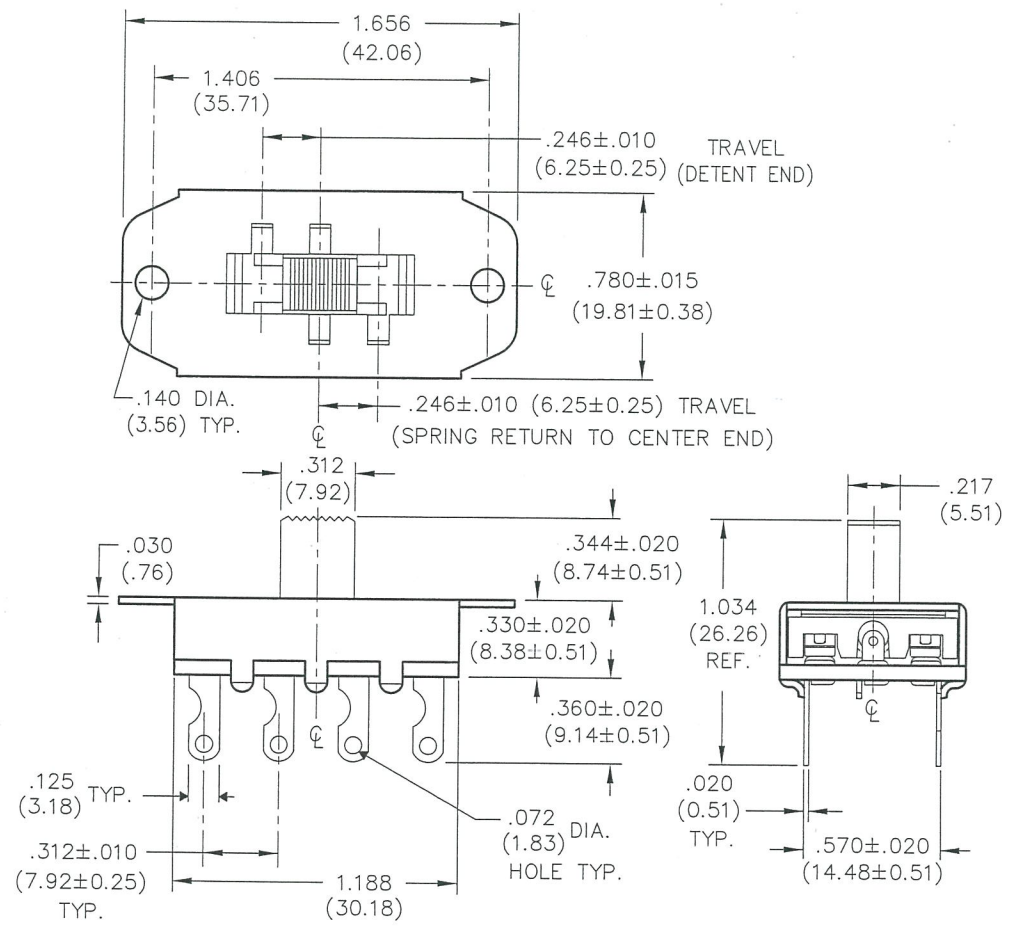


F
D
C
B
A

DIMENSIONS IN INCHES (MILLIMETERS)
DO NOT SCALE DRAWING

Dwg. No.
G-335S-0000



B-FORMAT 2002

1	2	3	4	5	6	7	8	9	10
<p>REVISIONS</p> <p>RELEASED: DGW 4-12-16 APR 15 2016</p>									

<p>CW INDUSTRIES Southampton, Pa. 18966</p>		<p>Title: MOMENTARY SLIDE SWITCH D.P. - 3 POS.</p>	
<p>TOLERANCES UNLESS OTHERWISE SPECIFIED</p>		<p>SPRING RETURN ONE END TO CENTER DETENT TO OTHER END TO CENTER</p>	
2 Place Decimal ±.010	METRIC	Division: SWITCH	
3 Place Decimal ±.005	1 Place Dec. ±.25mm	Dwg. No. G-335S-0000	
Angles ±1°	2 Place Dec. ±.13mm	Approval: G. GULD 4-18-16	
Made for: CW IND.			
Drawn by: DGW 4-12-16			

MASTER