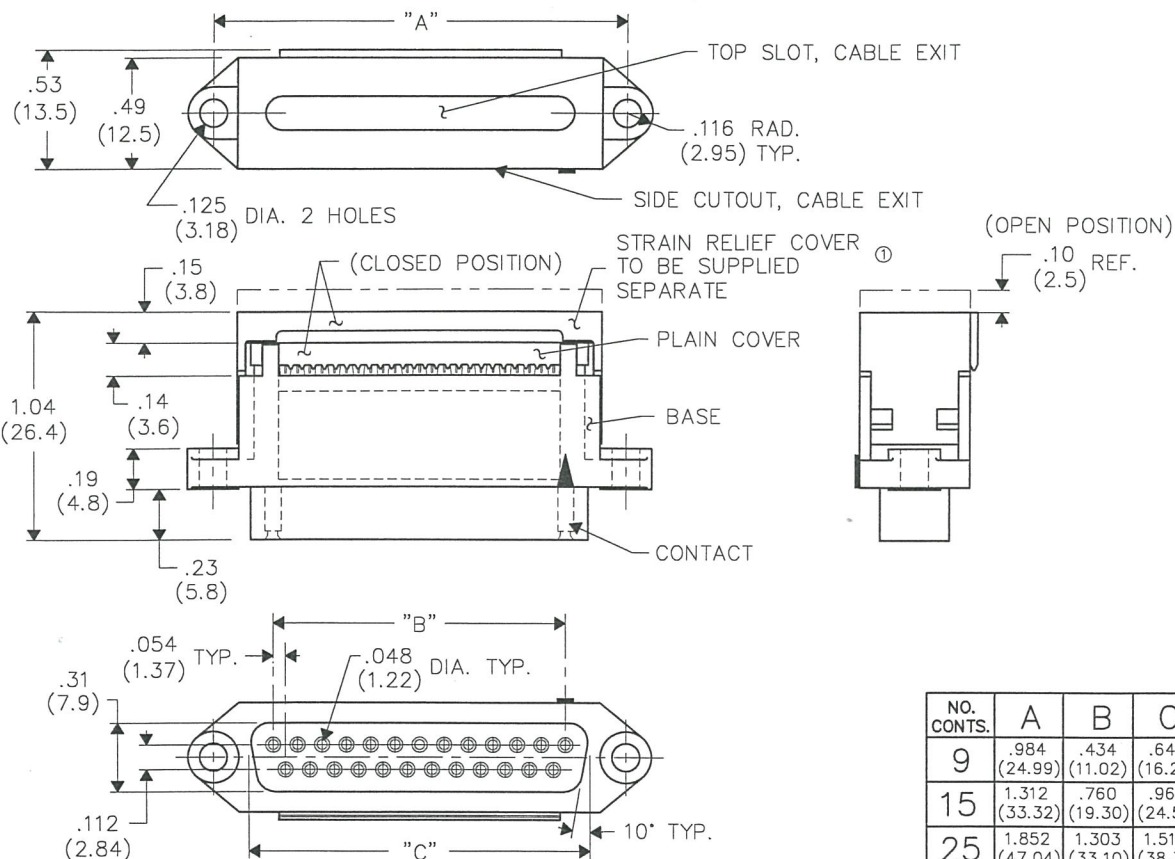


REVISIONS

0	RELEASED
1	DGW 10-16-95 REV 10-16-95 ADDED TO BE SUPPLIED SEPARATE TO STRAIN RELIEF COVER. DGW 12-03-2007 G.G. DEC 05 2007



DIMENSIONS IN INCHES (MILLIMETERS)
DO NOT SCALE DRAWING

Dwg. No.

CWR-183-XX-0000

NOTES:

1. Dimensions are in inches; dimensions in () are millimeters.
2. Metric equivalents are given for general information only, and are based upon 1.00 inches equals (25.4) millimeters.
3. Unless otherwise specified, tolerances are ± 0.005 (.13) for three place decimals, and ± 0.01 (.3) for two place decimals.

MATERIALS:

PLASTIC PARTS — UL94V-0 thermoplastic (blue, standard) flame retardant.

CONTACTS — Phosphor bronze.

CONTACT PLATING— Selective gold plating, .000010 (min.) gold in mating area and .000100(min.) Tin-Lead on the termination end, All over .000050 (min.) nickel.

OPERATING STANDARDS:

TEMPERATURE RATING — 120° C

CONTACT RATING — 1 ampere.

DIELECTRIC STRENGTH — Over 500V.D.C. at sea level.

CONDUCTORS ACCEPTED — 28-30 AWG solid or stranded.

INSULATION RESISTANCE — Greater than 5×10^9 ohms.

CUSTOMER DRAWING

ATTENTION

THIS DRAWING AND ITS ATTACHMENTS, IF ANY, ARE PROPRIETARY TO CW INDUSTRIES AND DESCRIBE DESIGNS THAT ARE CONFIDENTIAL AND MUST NOT BE DISCLOSED UNLESS AUTHORIZED, IN WRITING, BY AN OFFICER OF CW INDUSTRIES.

CW INDUSTRIES
Southampton, Pa. 18966

Title:

PLASTIC
"D" CONNECTOR
(PLUG)
FEMALE CONTACTS

TOLERANCES UNLESS OTHERWISE SPECIFIED
2 Place decimal ± 0.010 METRIC
3 Place decimal ± 0.005 1 Place dec. ± 0.25 mm
Angles $\pm 1^\circ$ 2 Place dec. ± 0.13 mm

Made for: CW IND.

Division:

CONNECTOR

Drawn by: DGW 10-16-95

Dwg. No.

Checked by: G.G. 10-18-95

CWR-183-XX-0000

Approval: A.HOSFIELD 10-19-95

MASTER