

2000 SERIES POWER SLIDE SWITCHES

OPERATING STANDARDS

Endurance: 100,000 cycles, no load minimum
25,000 cycles at rated load minimum

Temperature: 105°C maximum

High Voltage: 2,500 V, 60 Hz for one minute
between mounting surface and circuit
connections (min.)

Contact Resistance: $< 0.01 \Omega$ at 10 mA

Relative Humidity: Insulation resistance $> 10^3 M\Omega$
after 100 hour soak at 95% R.H. and 50°C and
1 hour dry in ambient room conditions.

MATERIALS

Rocker Knob: Nylon 94V-2

Housing: Nylon, 94V-2

Terminal & Moving Contact: Copper and/or
copper alloy silver plated

OPTIONAL FEATURES

TERMINATION:

Standard switches have a .250" (6.35 mm) blade
terminals for solderless connection.

For easier hand soldering, specify optional terminal
G-20-190 having a .156" (3.96 mm) diameter hole
in a .250" (6.35 mm) wide solder tab.

INSULATING BARRIERS:

Standard switch construction is without barriers.
Optional molded insulating barriers between
terminals, as shown at right, permit the use of
uninsulated solderless connectors. Specify your
switch "with barriers" if needed.

COLORS:

Our standard switch includes black housing and
rocker knob. Knobs and housings can be molded
in many colors. Contact us if you have unusual
color needs.

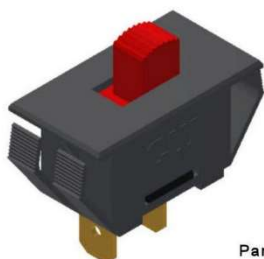
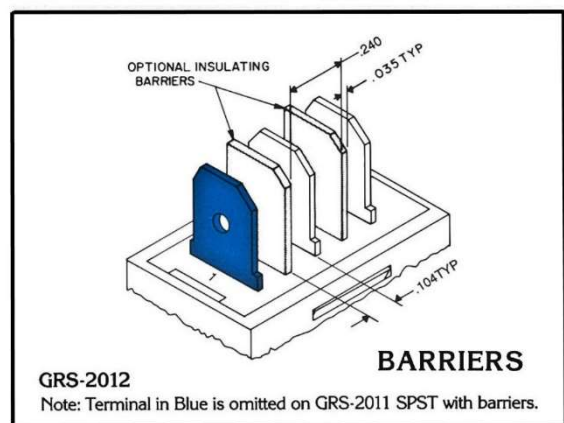
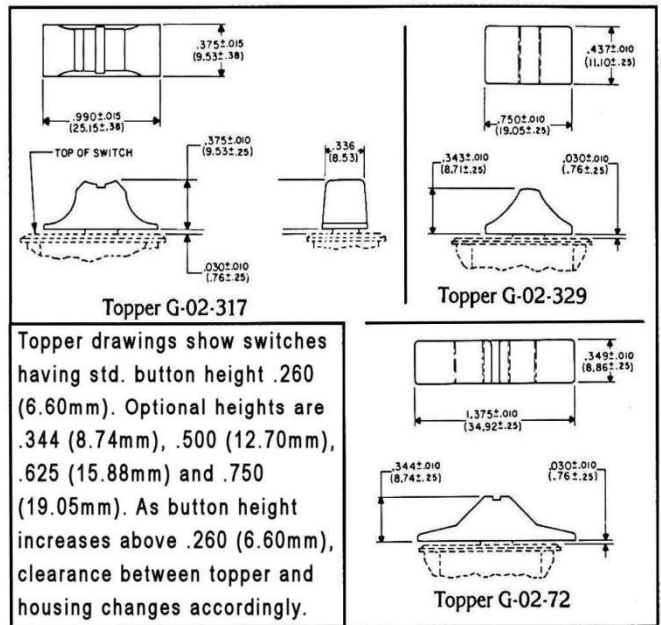
SPECIAL MARKINGS:

Printing on the knob or housing indicating message
appropriate to the application ("ON - OFF," "HI - LO,"
"I/O," etc.), is available. Check factory.

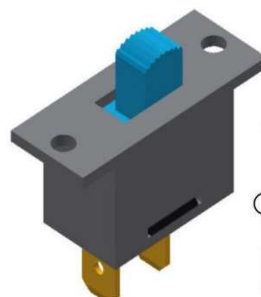
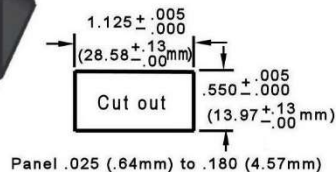
FEATURES

- Light, yet positive detent action—virtually tease-proof.
- Choice of colors and markings:
- Easy self-locking panel mount—no mounting hardware required.
- Fully enclosed active switching elements.
- Unique combination sliding and rotating action ensures contact cleanliness.

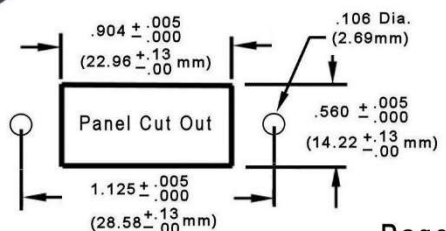
G-2011 Switch (with G-02-329 Topper)

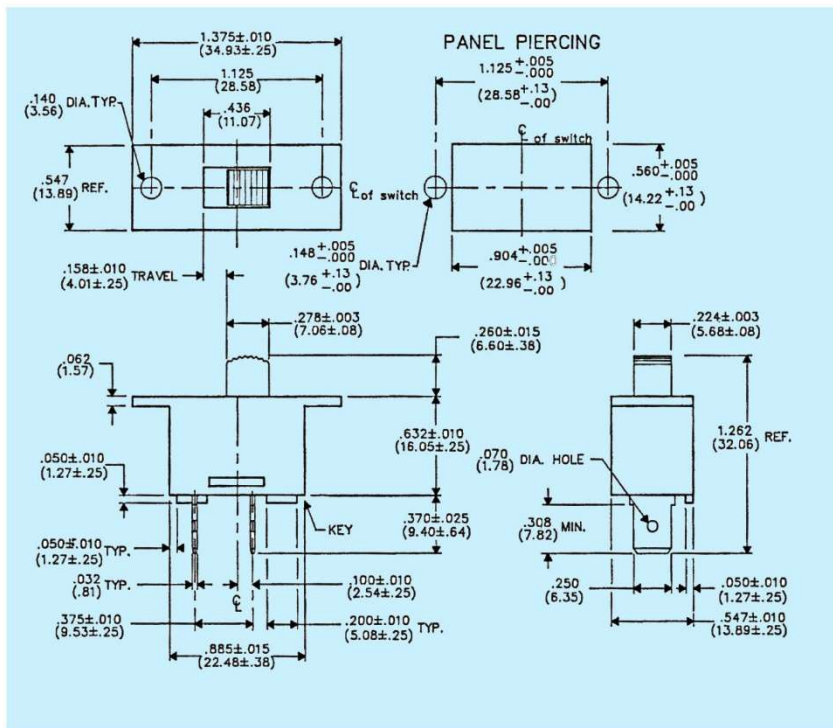
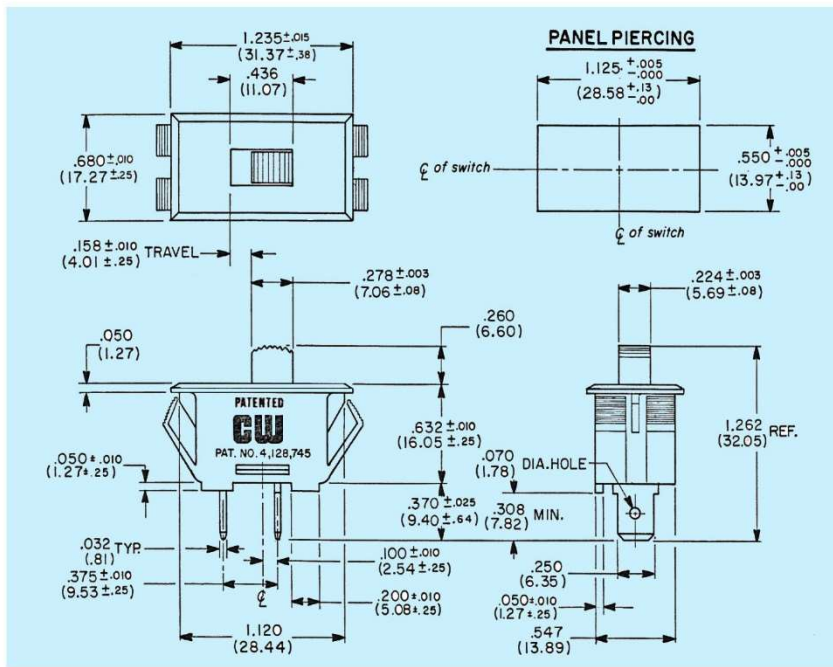


G-2011/ G-2012



GS-2011/GS-2012





TYPE	CIRCUIT	ELECTRICAL RATINGS	LISTING AGENCIES
G-2011-8/GS-2011-8	SPST	8A 125VAC	UL & CSA
G-2012-8/GS-2012-8	DPDT	4A 250VAC	
G-2011-13/GS-2011-13	SPST	13A 125VAC	UL & CSA
G-2012-13/GS-2012-13	SPDT	10A 250VAC 1/2 HP 125-250VAC 5A 14 V (T) 6A 125 V (L)	
G-2011-16/GS-2011-16	SPST	16A 125VAC	UL, CSA & VDE
G-2012-16/GS-2012-16	SPDT	12A 250VAC 3/4 HP 125-250VAC 10A 14 V (T) 10(2)A 250 (VDE) (G-2011, G-2012 Only)	